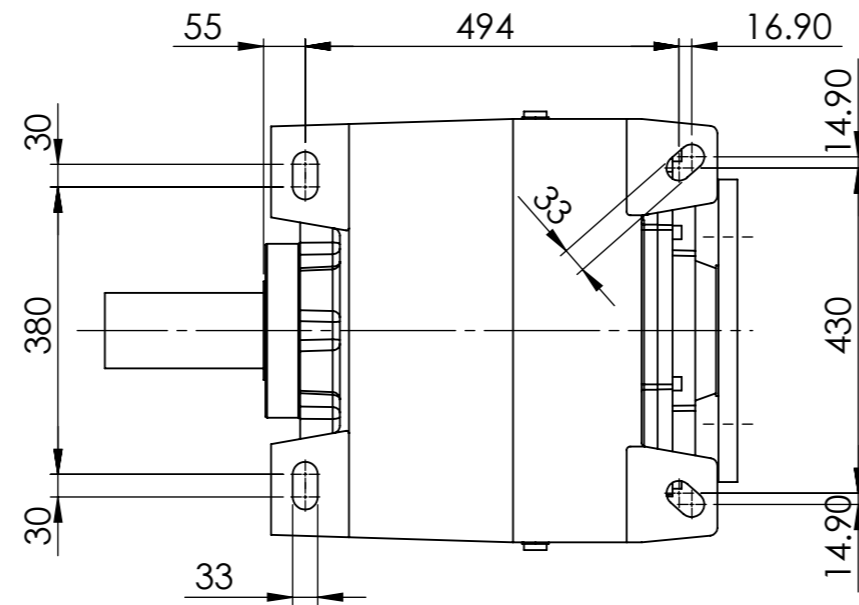
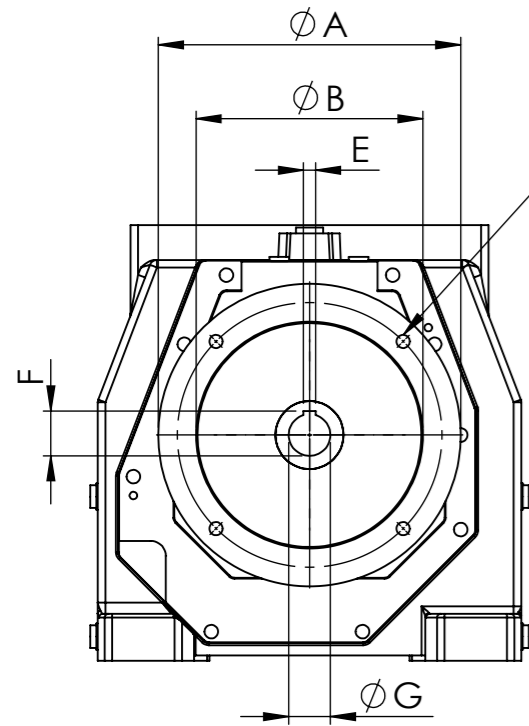


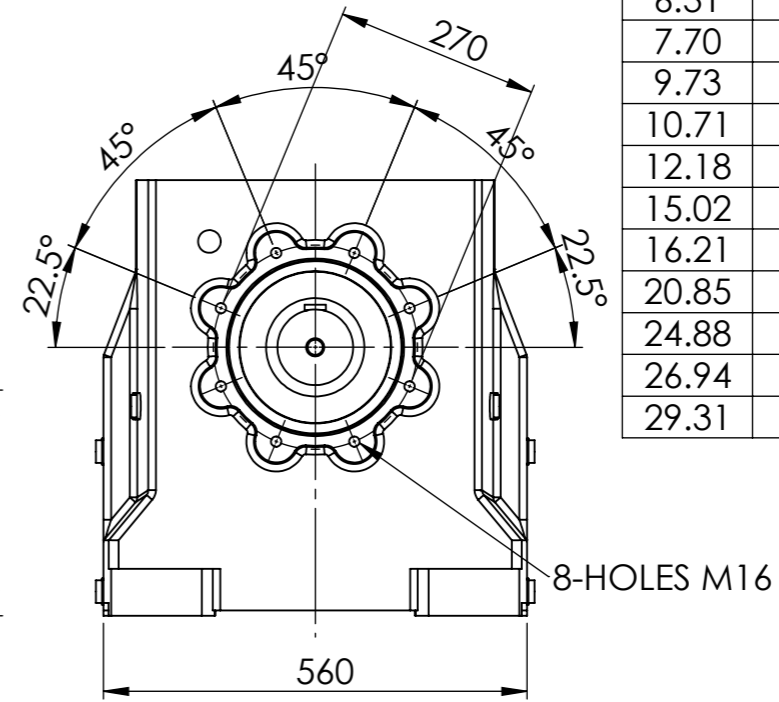
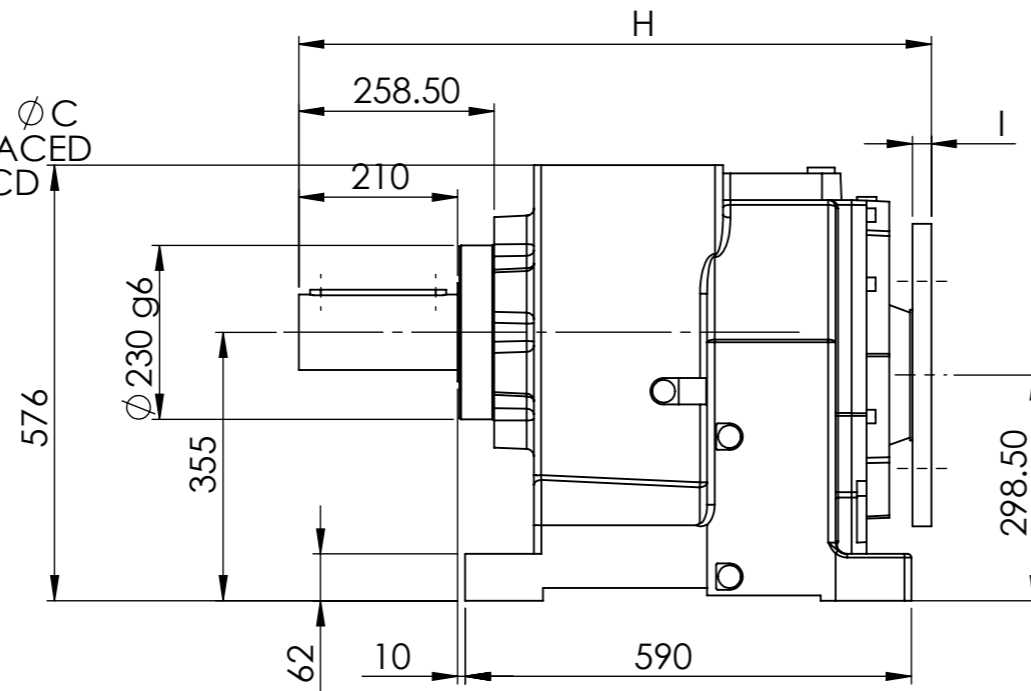
IF IN DOUBT - ASK



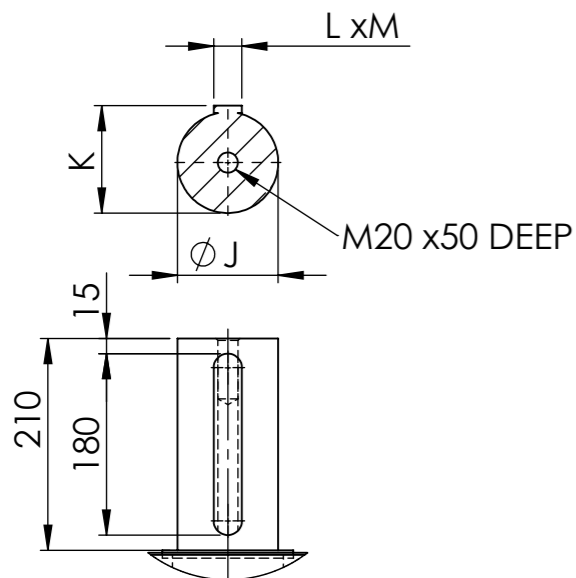
INPUT FLANGE DIMENSIONS									
	A	B	C	D	E	F	G	H	I
160/B5	350	250	18	300	12	45.3	42	836	25
180/B5	350	250	18	300	14	51.8	58	836	25
200/B5	400	300	18	350	16	59.3	55	836	25
225/B5	450	350	20*	400	18	64.4	60	903	25
250/B5	550	450	20*	450	18	69.4	65	903	25
280/B5	550	450	20*	450	20	79.5	75	903	25



4-HOLES ϕC
EQUI-SPACED
ON D PCD



100/2	MOTOR					
RATIO	160	180	200	225	250	280
5.03			/	/	/	/
5.63			/	/	/	/
6.31			/	/	/	/
7.70			/	/	/	/
9.73			/	/	/	/
10.71			/	/	/	/
12.18			/	/	/	/
15.02			/	/	/	/
16.21			/	/	/	/
20.85	/	/	/	/	/	
24.88	/	/	/	/	/	
26.94	/	/	/	/	/	
29.31	/	/	/	/	/	



	OUTPUT SHAFT DIMENSIONS			
	J(j6)	K	L	M
STANDARD	100	106	28	16

*8 HOLRS AT 25 DEGREES

ELECTRIC MOTORS & GEARBOXES LTD
 ASHMORE LAKE INDUSTRIAL ESTATE, WILLENHALL, WEST MIDLANDS, WV12 4LH
 PHONE 01902 601403, FAX 01902 601408.
 E MAIL sales@emag-ltd.co.uk

THIS DRAWING IN DESIGN & DETAIL IS THE PROPERTY OF EMAG LTD AND IS INTENDED SOLELY FOR THE USE OF THE PERSON OR COMPANY TO WHOM IT IS ISSUED. IN NO EVENT SHALL IT BE COPIED OR LOANED WITHOUT THE EXPRESS PERMISSION OF EMAG LTD

© ELECTRIC MOTORS & GEARBOXES LTD		FIRST ANGLE PROJECTION	
TITLE MNHL 100		CLIENT	
DRAWN R SPENCER	SCALE 1:10 (A3)	DRG No MNHL 100/2 GEAR UNIT	
DATE			