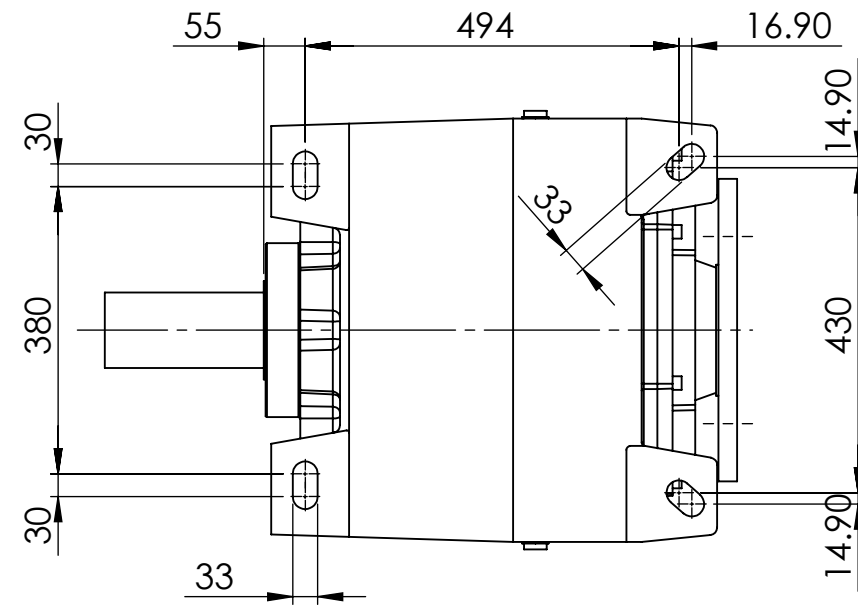
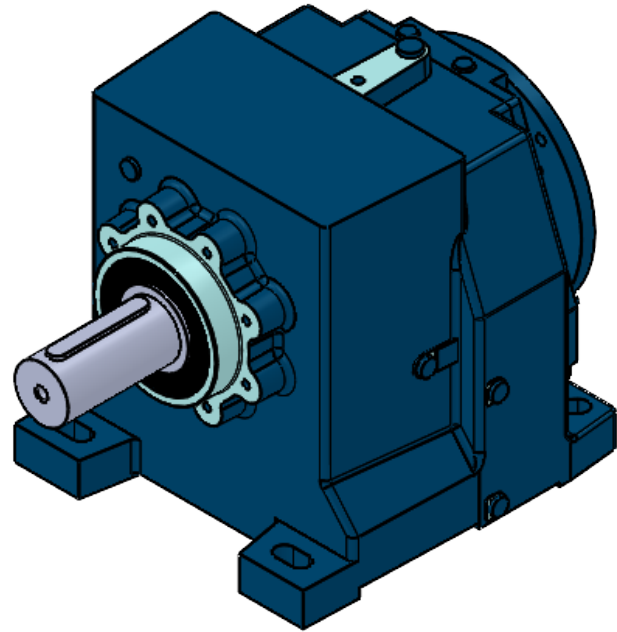
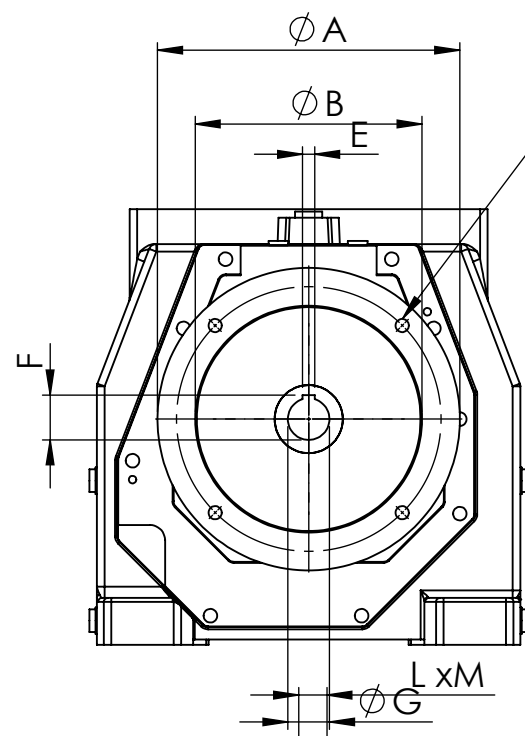


IF IN DOUBT - ASK

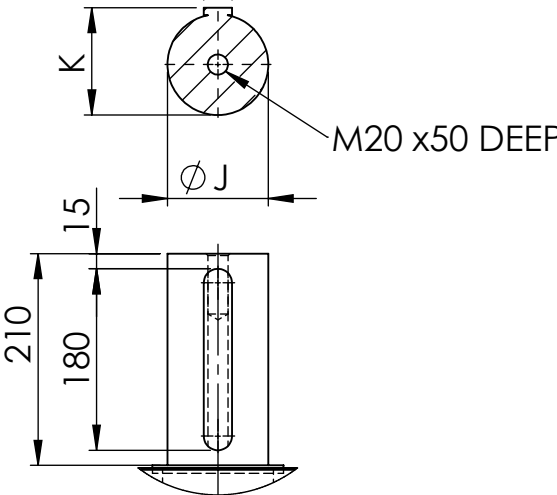
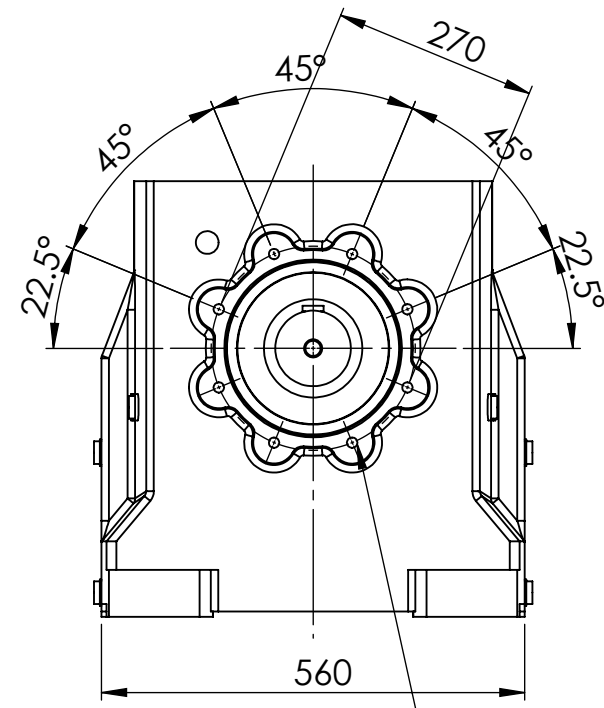
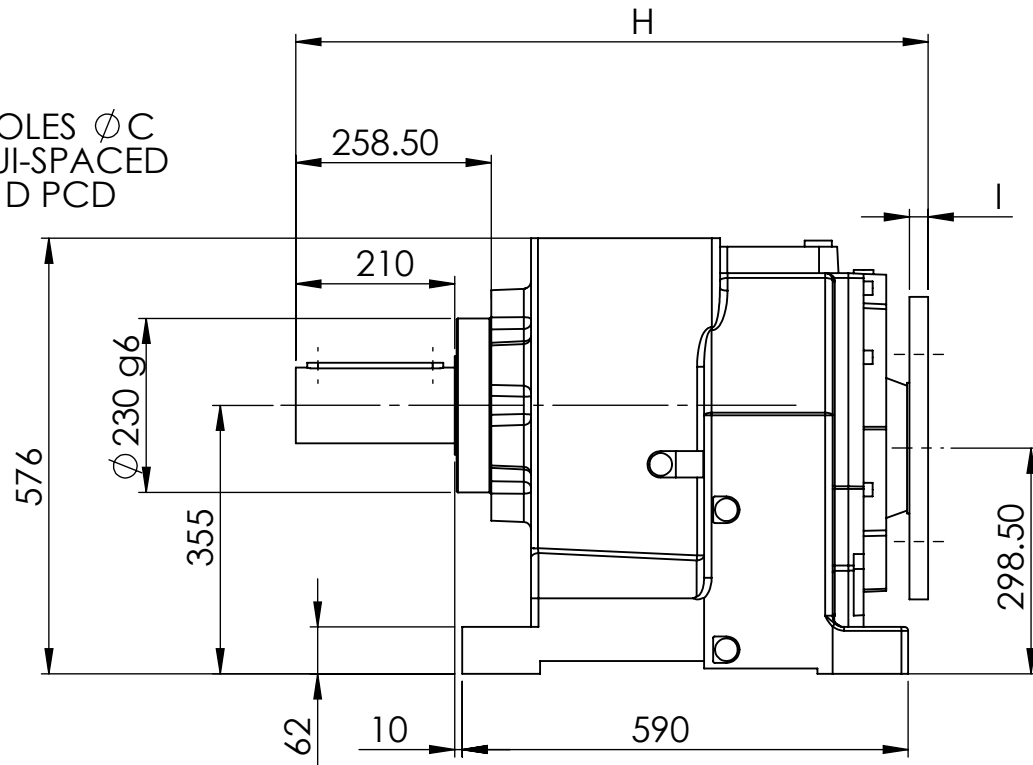


INPUT FLANGE DIMENSIONS									
	A	B	C	D	E	F	G	H	I
132 B5	300	230	14	265	10	41.3	38	880.5	25
160/B5	350	250	18	300	12	45.3	42	880.5	25
180/B5	350	250	18	300	14	51.8	58	880.5	25
200/B5	400	300	18	350	16	59.3	55	880.5	25
225/B5	450	400	18	400	18	64.4	60	880.5	25

100/3	MOTOR				
RATIO	132	160	180	200	225
30.75	/	/	/	/	/
35.91	/	/	/	/	/
40.10	/	/	/	/	/
47.96	/	/	/	/	/
54.66	/	/	/	/	/
63.03	/	/	/	/	/
73.79	/	/	/	/	/
80.41	/	/	/	/	/
88.14	/	/	/	/	/
97.27	/	/	/	/	/
108.22	/	/	/	/	/
121.61	/	/	/	/	/



4-HOLES ØC
EQUI-SPACED
ON D PCD



OUTPUT SHAFT DIMENSIONS				
	J(j6)	K	L	M
STANDARD	100	106	28	16

EMAG ELECTRIC MOTORS & GEARBOXES LTD
 ASHMORE LAKE INDUSTRIAL ESTATE, WILLENHALL, WEST MIDLANDS, WV12 4LH
 PHONE 01902 601403, FAX 01902 601408.
 E MAIL sales @emag-ltd.co.uk

THIS DRAWING IN DESIGN & DETAIL IS THE PROPERTY OF EMAG LTD AND IS INTENDED SOLELY FOR THE USE OF THE PERSON OR COMPANY TO WHOM IT IS ISSUED. IN NO EVENT SHALL IT BE COPIED OR LOANED WITHOUT THE EXPRESS PERMISSION OF EMAG LTD

© ELECTRIC MOTORS & GEARBOXES LTD		FIRST ANGLE PROJECTION	
TITLE MNHL 100		CLIENT	
DRAWN R SPENCER	SCALE 1:10 (A3)	DRG No MNHL 100/3 GEAR UNIT	
DATE			