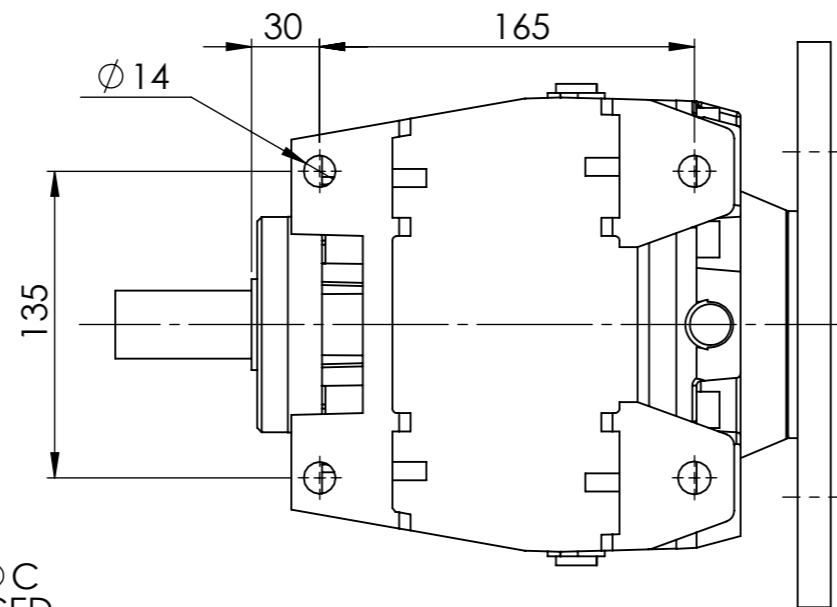
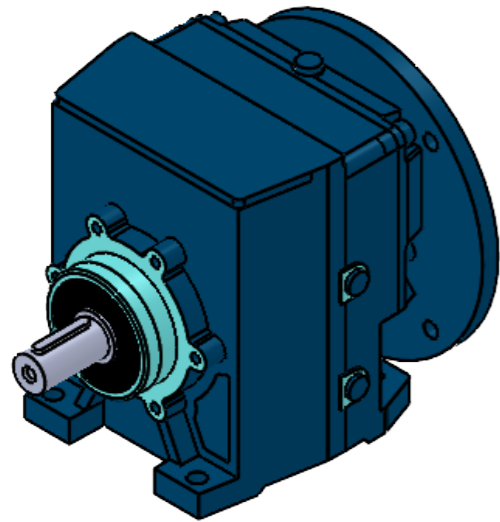
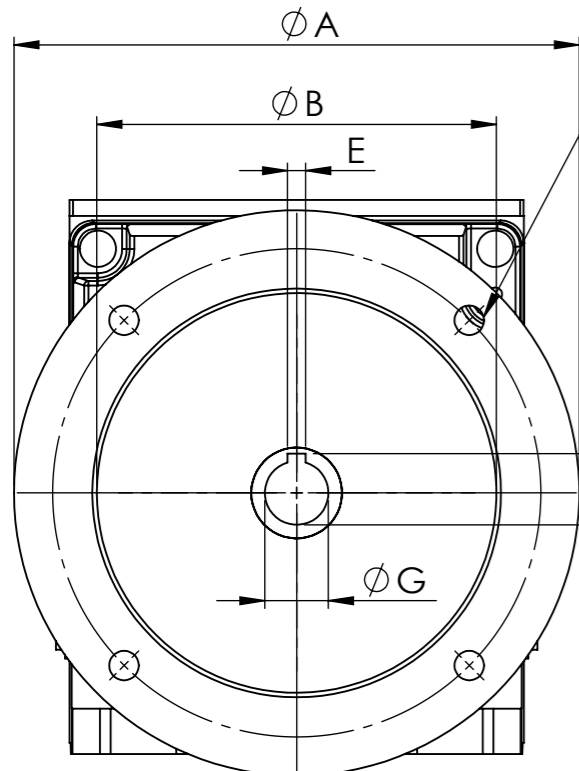


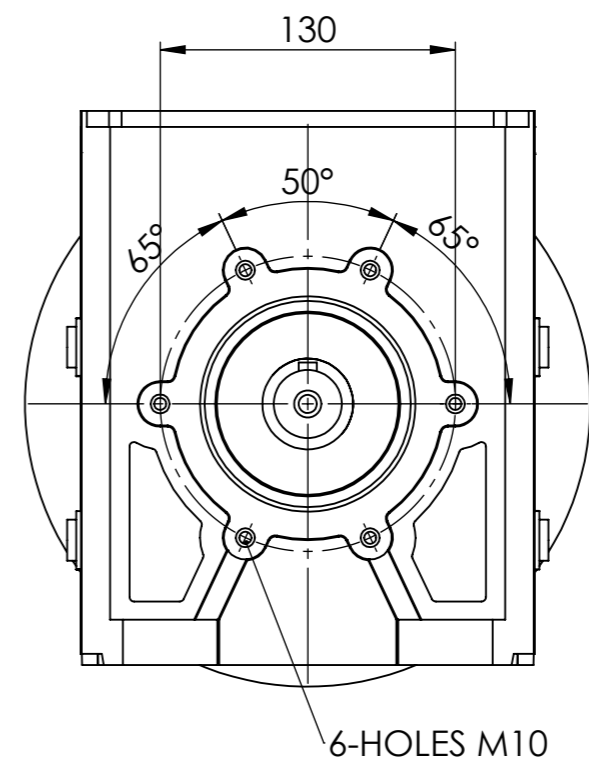
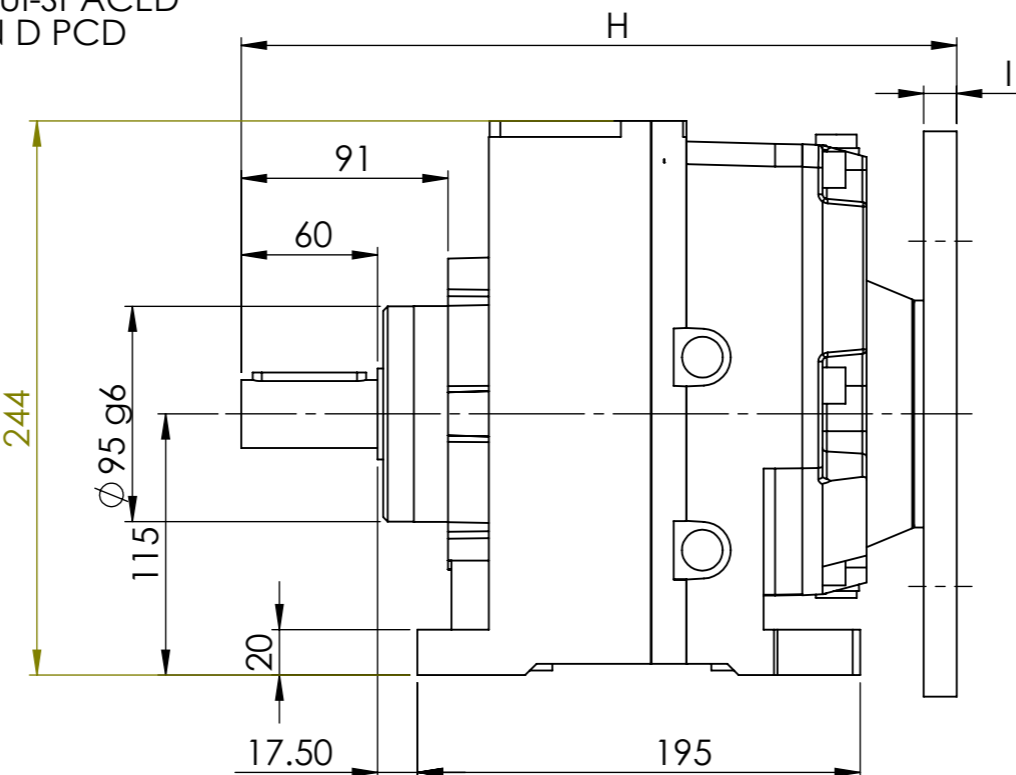
IF IN DOUBT - ASK



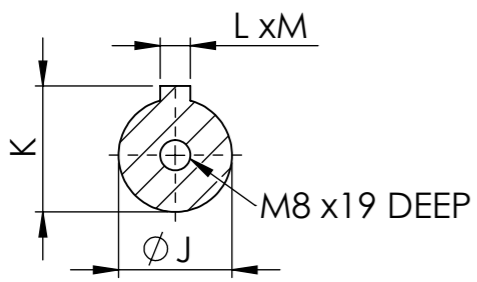
INPUT FLANGE DIMENSIONS									
	A	B	C	D	E	F	G	H	I
71 B5	160	110	10	130	5	16.2	14	318	9
71 B14	105	70	7	85	5	16.2	14		
80 B5	200	130	12	165	6	21.5	19	312	11
80 B14	120	80	7	100	6	21.5	19		
90 B5	200	130	12	165	6	27	24	312	11
90 B14	140	95	7	115	6	27	24		
100 B5	250	180	14	215	8	31	28	315	13
100 B14	160	110	10	130	8	31	28		



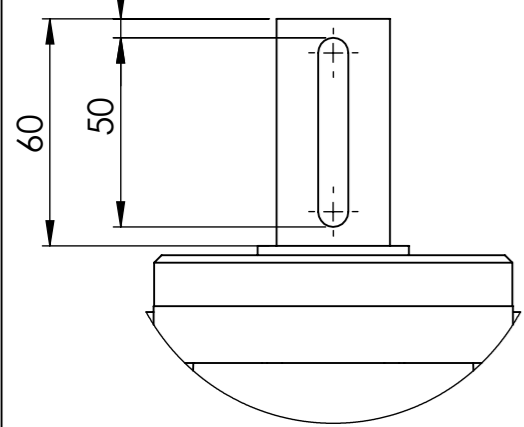
4-HOLES ϕC
EQUI-SPACED
ON D PCD



30/2	MOTOR				
RATIO	71	80	90	100	112
2.25			/	/	/
3.08			/	/	/
3.63			/	/	/
4.72			/	/	/
5.43			/	/	/
6.34			/	/	/
7.43			/	/	/
8.76			/	/	/
9.97			/	/	/
11.43			/	/	/
13.21			/	/	/
15.43			/	/	
18.29		/	/	/	
20.69		/	/	/	
23.66		/	/	/	
27.43	/	/	/		
32.35	/	/	/		
38.65	/	/	/		
43.43	/	/	/		
48.76	/	/	/		



	OUTPUT SHAFT DIMENSIONS			
	J(j6)	K	L	M
OPTIONAL	28	31.3	8	7
STANDARD	30	33.3	8	7



ELECTRIC MOTORS & GEARBOXES LTD
ASHMORE LAKE INDUSTRIAL ESTATE, WILLENHALL, WEST MIDLANDS, WV12 4LH
PHONE 01902 601403, FAX 01902 601408.
E MAIL sales @emag-ltd.co.uk

THIS DRAWING IN DESIGN & DETAIL IS THE PROPERTY OF EMAG LTD AND IS INTENDED SOLELY FOR THE USE OF THE PERSON OR COMPANY TO WHOM IT IS ISSUED. IN NO EVENT SHALL IT BE COPIED OR LOANED WITHOUT THE EXPRESS PERMISSION OF EMAG LTD

© ELECTRIC MOTORS & GEARBOXES LTD		FIRST ANGLE PROJECTION	
TITLE MNHL 30		CLIENT	
DRAWN R SPENCER	SCALE 1:3.33 (A3)	DRG No	MNHL 30/2 GEAR UNIT
DATE			