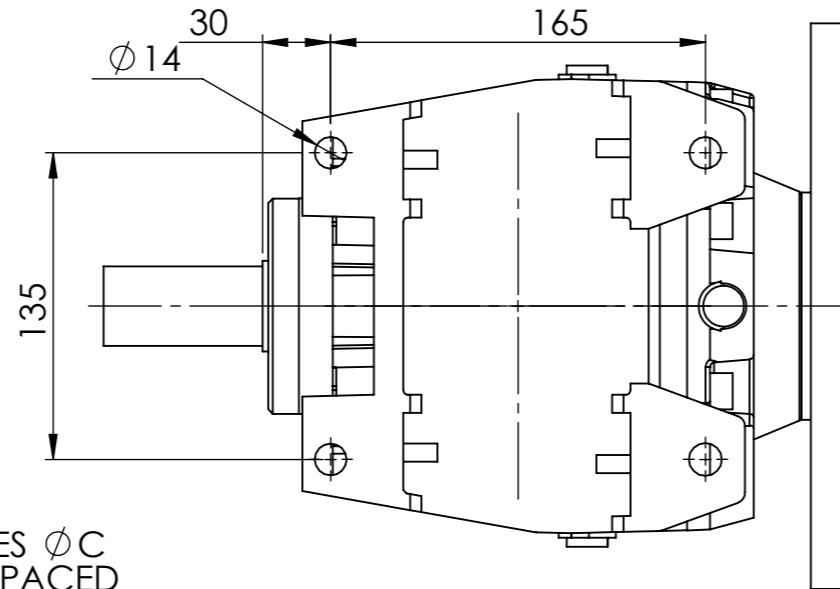
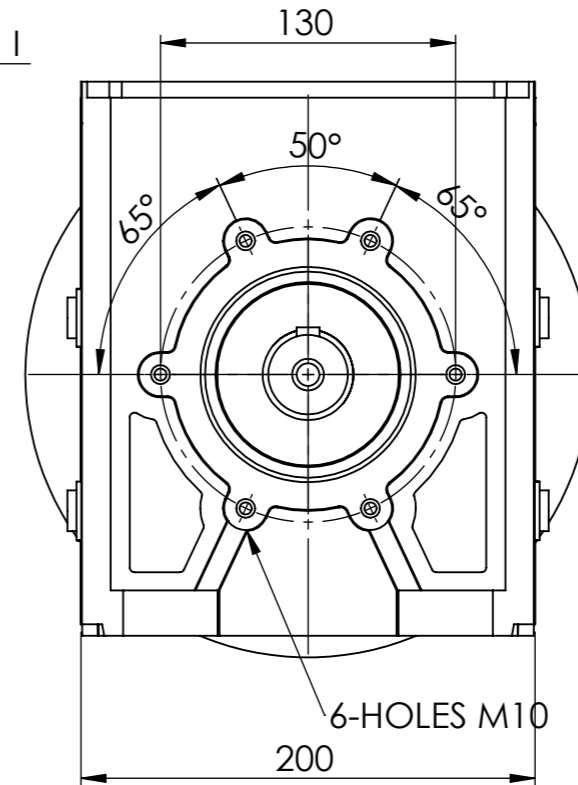
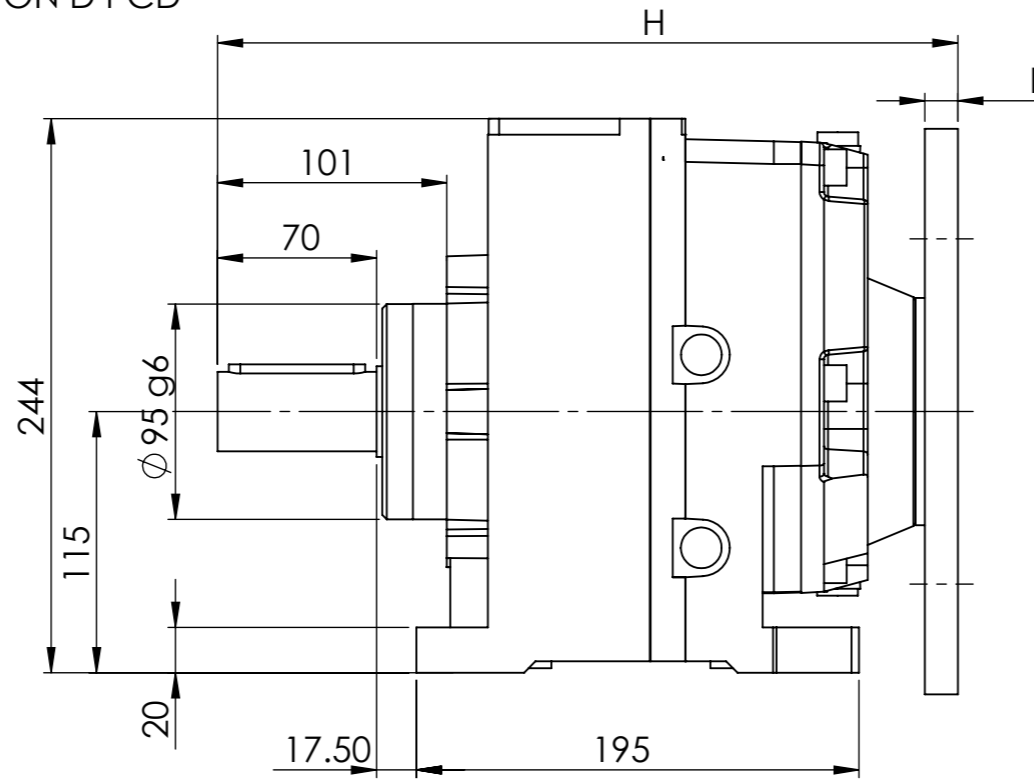
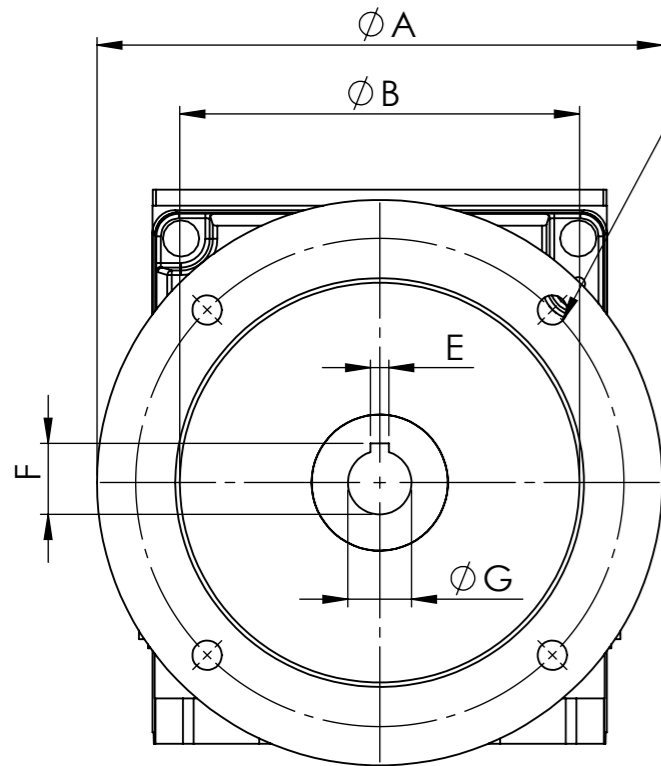


IF IN DOUBT - ASK

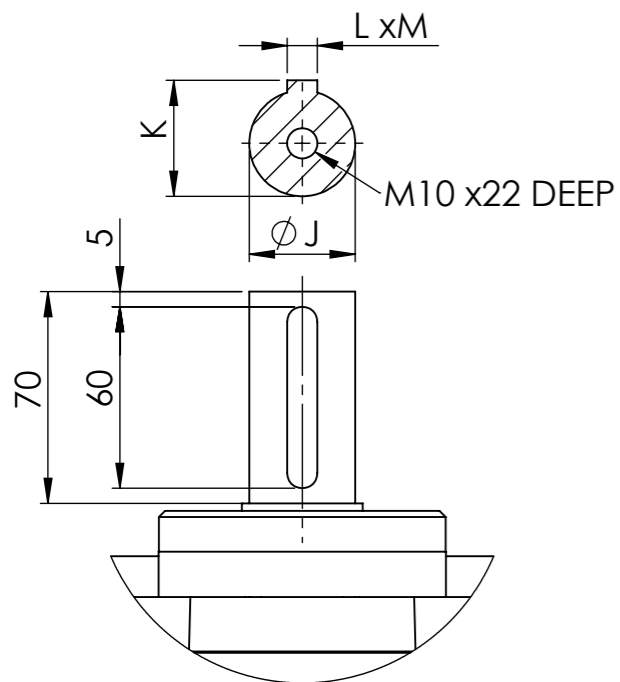


INPUT FLANGE DIMENSIONS									
	A	B	C	D	E	F	G	H	I
71 B5	160	110	10	130	5	16.2	14	329	10
71 B14	105	70	7	85	5	16.2	14		
80 B5	200	130	12	165	6	21.5	19	323	11
80 B14	120	80	7	100	6	21.5	19		
90 B5	200	130	12	165	6	27	24	323	11
90 B14	140	95	7	115	6	27	24		
100/112 B5	250	180	14	215	8	31	28	326	13
100/112 B14	160	110	10	130	8	31	28		
132 B5	300	230	14	265	10	41.3	38	342	15

4-HOLES ϕ C
EQUI-SPACED
ON D PCD



35/2	MOTOR				
RATIO	71	80	90	100/112	132
2.25			/	/	/
2.78			/	/	/
5.12			/	/	/
5.97			/	/	/
7.00			/	/	/
8.26			/	/	/
9.40			/	/	/
10.77			/	/	
12.44			/	/	
14.54			/	/	
17.23			/	/	
19.50		/	/	/	
22.30		/	/	/	
25.85		/	/	/	
30.49	/	/	/	/	
36.42	/	/	/	/	
40.95	/	/	/	/	
45.95	/	/	/	/	



OUTPUT SHAFT DIMENSIONS				
	J(j6)	K	L	M
STANDARD	35	38	10	8



ELECTRIC MOTORS & GEARBOXES LTD
 ASHMORE LAKE INDUSTRIAL ESTATE, WILLENHALL, WEST MIDLANDS, WV12 4LH
 PHONE 01902 601403, FAX 01902 601408.
 E MAIL sales@emag-ltd.co.uk

THIS DRAWING IN DESIGN & DETAIL IS THE PROPERTY OF EMAG LTD AND IS INTENDED SOLELY FOR THE USE OF THE PERSON OR COMPANY TO WHOM IT IS ISSUED. IN NO EVENT SHALL IT BE COPIED OR LOANED WITHOUT THE EXPRESS PERMISSION OF EMAG LTD

© ELECTRIC MOTORS & GEARBOXES LTD		FIRST ANGLE PROJECTION	
TITLE MNHL 35		CLIENT	
DRAWN R SPENCER	SCALE 1:3.33 (A3)	DRG No	MNHL 35/2 GEAR UNIT
DATE			