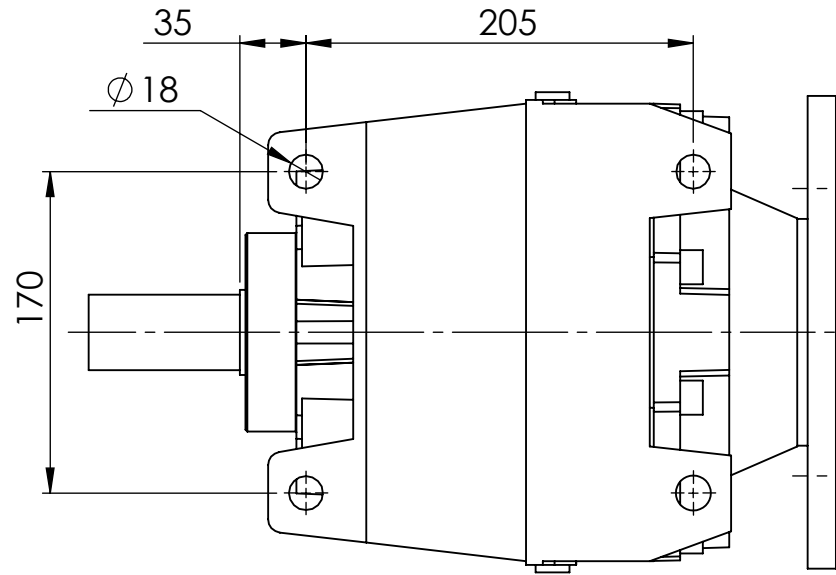
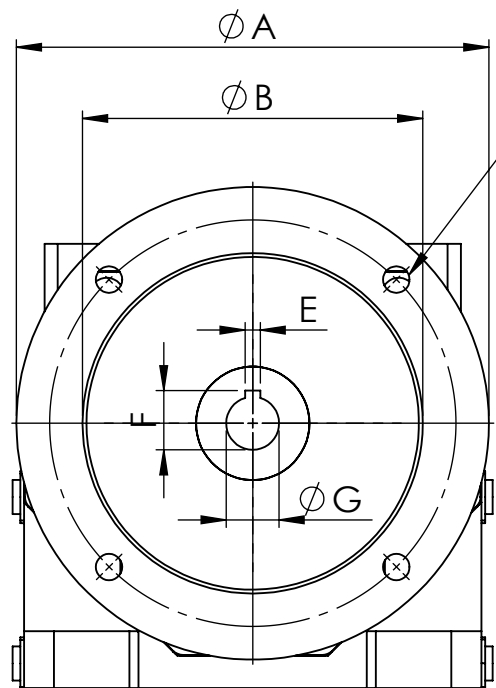


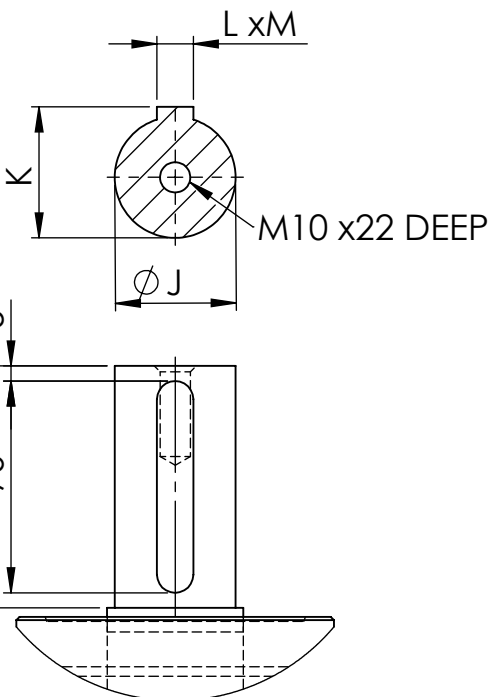
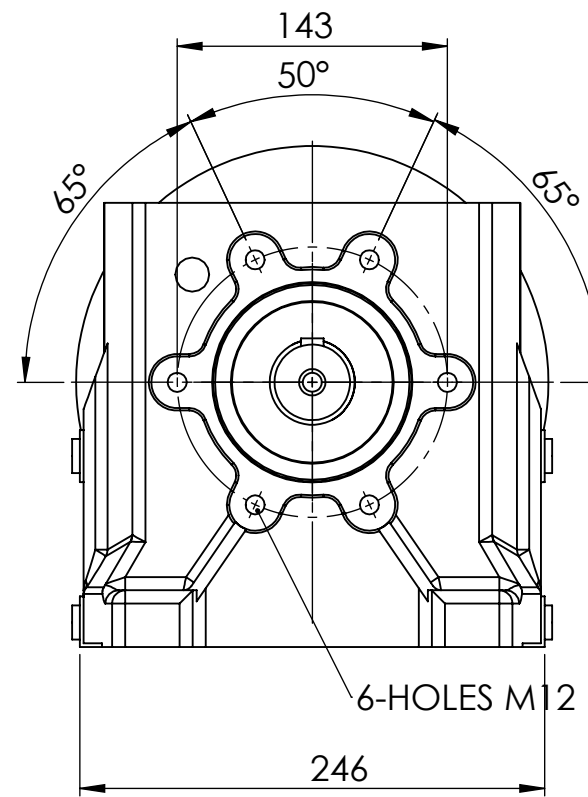
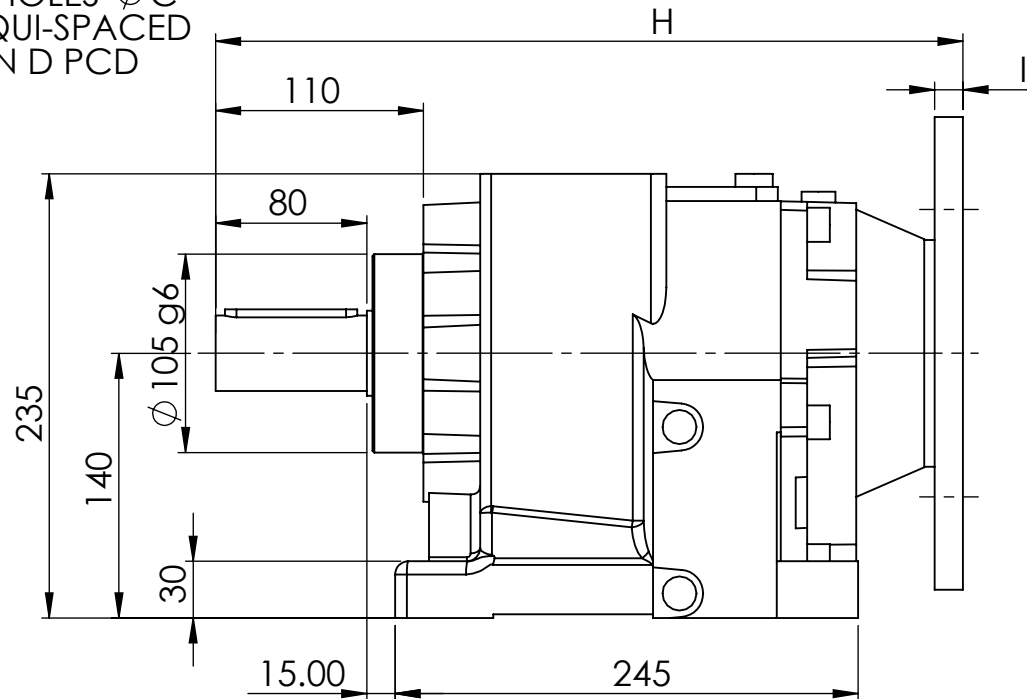
IF IN DOUBT - ASK



INPUT FLANGE DIMENSIONS									
	A	B	C	D	E	F	G	H	I
80 B5	200	130	12	165	6	21.5	19	392.5	11.5
90 B5	200	130	12	165	6	27	24	392.5	11.5
100/112 B5	250	180	14	215	8	31	28	392.5	14
132 B5	300	230	14	265	8	31	28	392.5	14



4-HOLES ϕC
EQUI-SPACED
ON D PCD



	OUTPUT SHAFT DIMENSIONS			
	J(j6)	K	L	M
OPTIONAL	38	31	10	8
STANDARD	40	43	12	8

40/2	MOTOR				
RATIO	80	90	100	112	132
2.27			/	/	/
3.17			/	/	/
3.78			/	/	/
4.53			/	/	/
5.06			/	/	/
5.96			/	/	/
7.04			/	/	/
8.38			/	/	/
10.06			/	/	/
11.45			/	/	/
13.14	/	/	/	/	/
15.22	/	/	/	/	/
17.85	/	/	/	/	/
21.30	/	/	/	/	/
23.45	/	/	/	/	/
29.05	/	/	/	/	/
32.78	/	/	/	/	/
37.96	/	/	/	/	/
42.21	/	/	/	/	/
47.40	/	/	/	/	/
53.09	/	/	/	/	/

EMAG ELECTRIC MOTORS & GEARBOXES LTD
 ASHMORE LAKE INDUSTRIAL ESTATE, WILLENHALL, WEST MIDLANDS, WV12 4LH
 PHONE 01902 601403, FAX 01902 601408.
 E MAIL sales @emag-ltd.co.uk

THIS DRAWING IN DESIGN & DETAIL IS THE PROPERTY OF EMAG LTD AND IS INTENDED SOLELY FOR THE USE OF THE PERSON OR COMPANY TO WHOM IT IS ISSUED. IN NO EVENT SHALL IT BE COPIED OR LOANED WITHOUT THE EXPRESS PERMISSION OF EMAG LTD

© ELECTRIC MOTORS & GEARBOXES LTD FIRST ANGLE PROJECTION

TITLE: **MNHL 40** CLIENT:

DRAWN: R SPENCER SCALE: 1:4 (A3) DRG No: **MNHL 40/2 GEAR UNIT**

DATE: