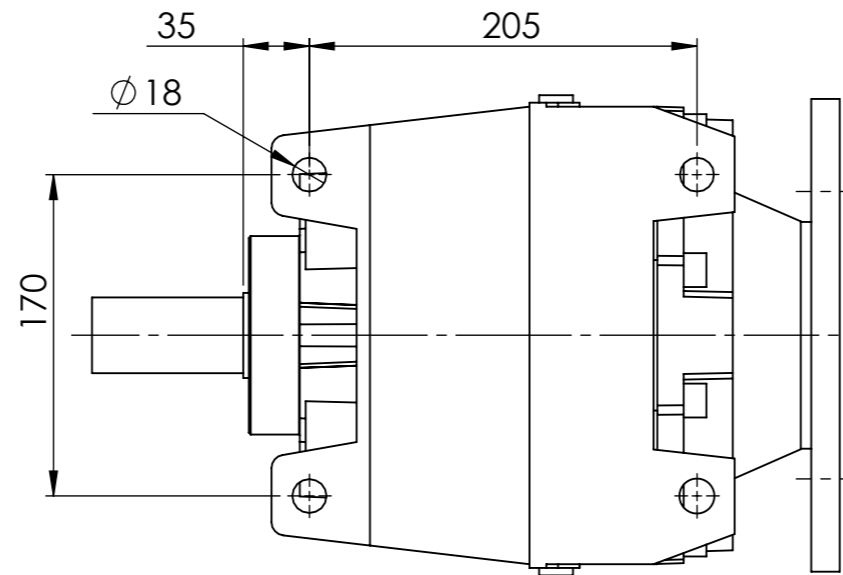
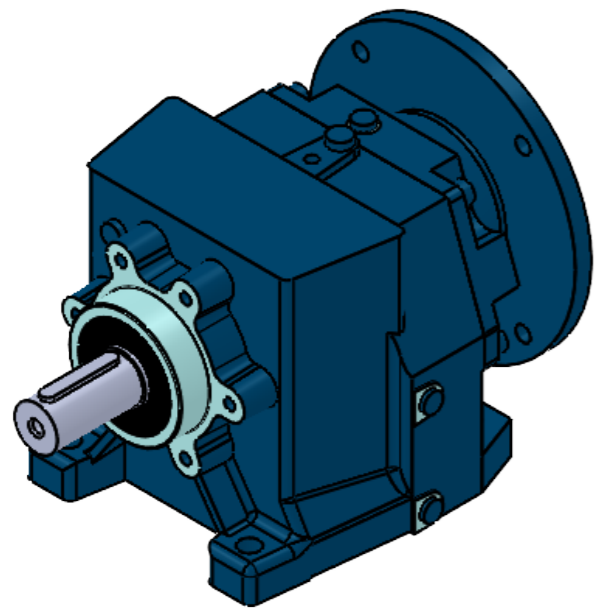
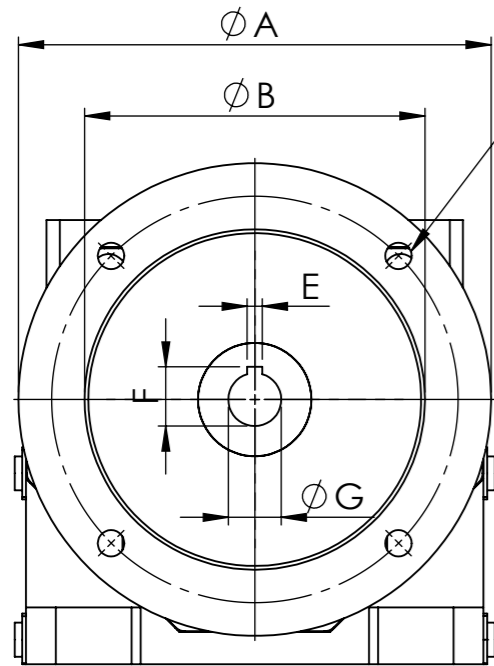


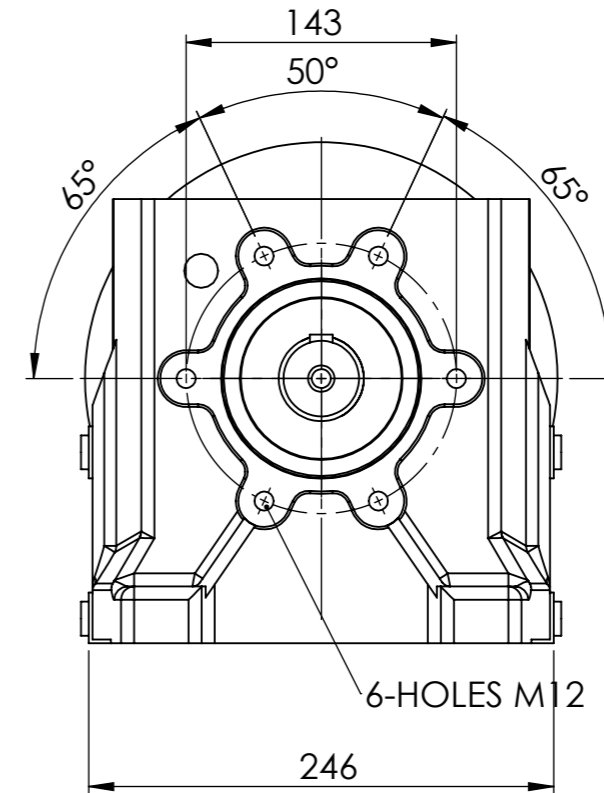
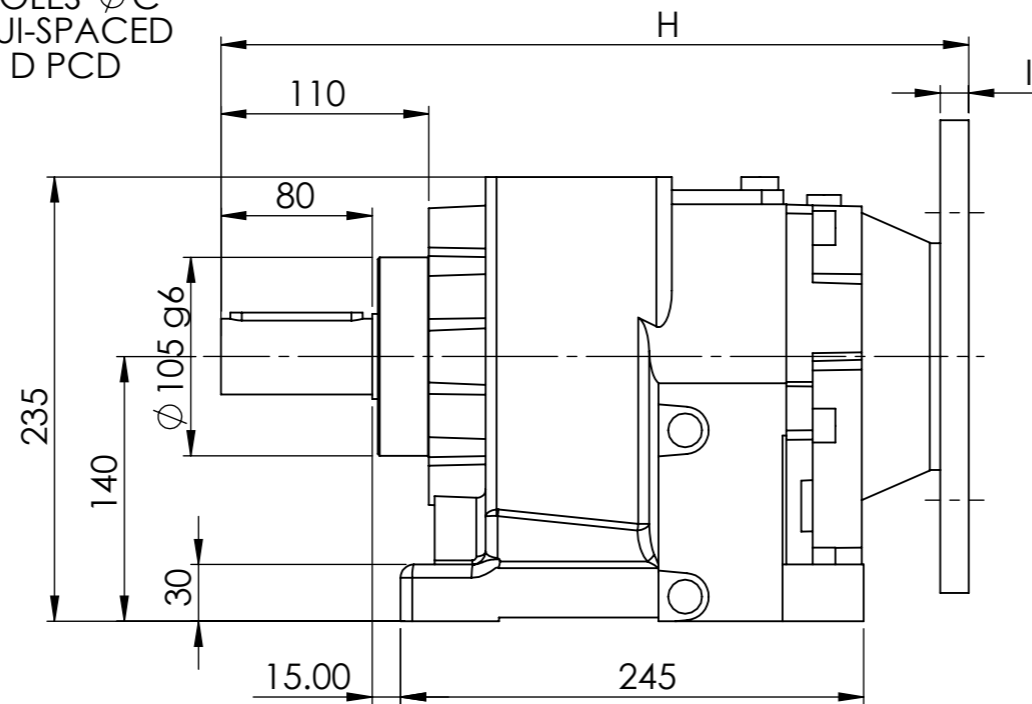
IF IN DOUBT - ASK



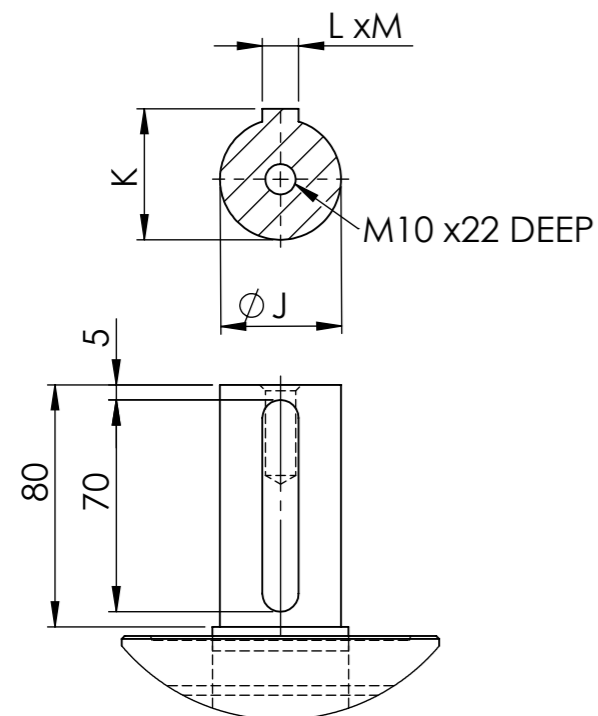
INPUT FLANGE DIMENSIONS									
	A	B	C	D	E	F	G	H	I
63 B5	140	95	10	115	4	12.8	11	318	9
71 B5	160	110	10	130	5	16.2	14	206	9
71 B14	105	70	7	85	5	16.2	14		
80 B5	200	130	12	165	6	21.5	19	317	11
80 B14	120	80	7	100	6	21.5	19		
90 B5	200	130	12	165	8	27.3	24	317	11
90 B14	140	95	7	115	8	27.3	24		



4-HOLES ϕC
EQUI-SPACED
ON D PCD



40/3	MOTOR			
RATIO	63	71	80	90
56.28	/	/	/	/
65.23	/	/	/	/
75.97	/	/	/	/
89.11	/	/	/	/
105.52	/	/	/	/
126.62	/	/	/	/
144.39	/	/	/	/
166.35	/	/	/	/
194.16	/	/	/	/
230.52	/	/	/	/
280.11	/	/	/	/
312.34	/	/	/	/
391.38	/	/	/	/
434.74	/	/	/	/



	OUTPUT SHAFT DIMENSIONS			
	J(j6)	K	L	M
OPTIONAL	38	31	10	8
STANDARD	40	43	12	8

EMAG ELECTRIC MOTORS & GEARBOXES LTD
 ASHMORE LAKE INDUSTRIAL ESTATE, WILLENHALL, WEST MIDLANDS, WV12 4LH
 PHONE 01902 601403, FAX 01902 601408.
 E MAIL sales@emag-ltd.co.uk

THIS DRAWING IN DESIGN & DETAIL IS THE PROPERTY OF EMAG LTD AND IS INTENDED SOLELY FOR THE USE OF THE PERSON OR COMPANY TO WHOM IT IS ISSUED. IN NO EVENT SHALL IT BE COPIED OR LOANED WITHOUT THE EXPRESS PERMISSION OF EMAG LTD

© ELECTRIC MOTORS & GEARBOXES LTD FIRST ANGLE PROJECTION

TITLE: **MNHL 40** CLIENT:

DRAWN: R SPENCER SCALE: 1:4 (A3) DRG No: **MNHL 40/3 GEAR UNIT**

DATE: