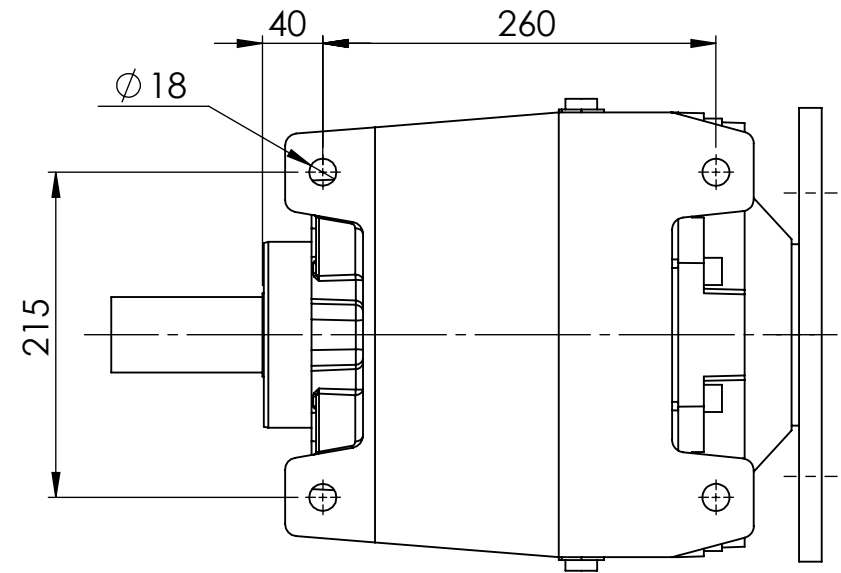
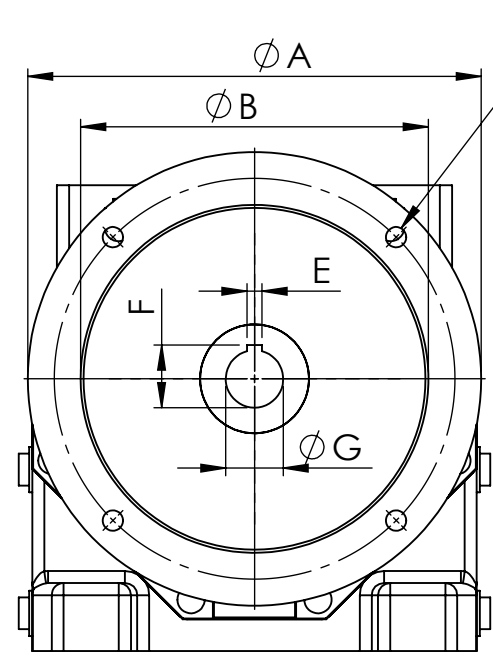


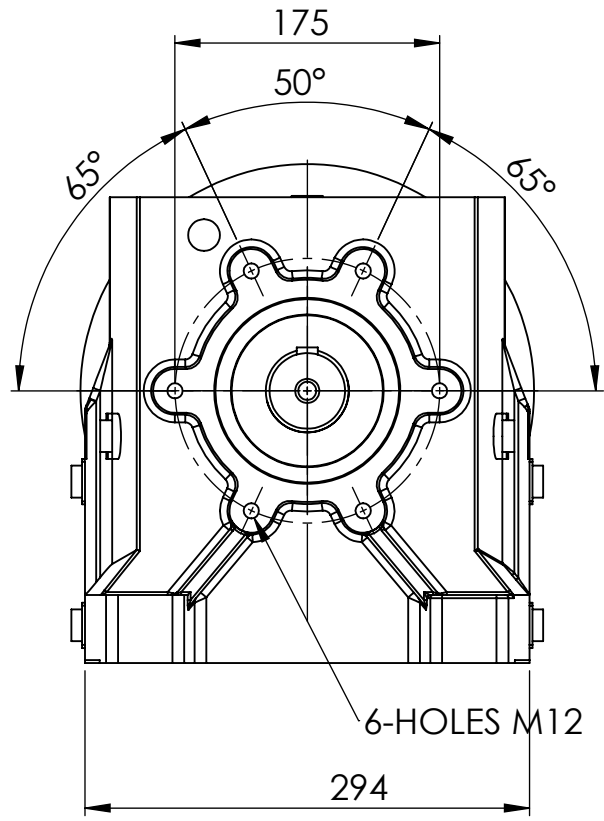
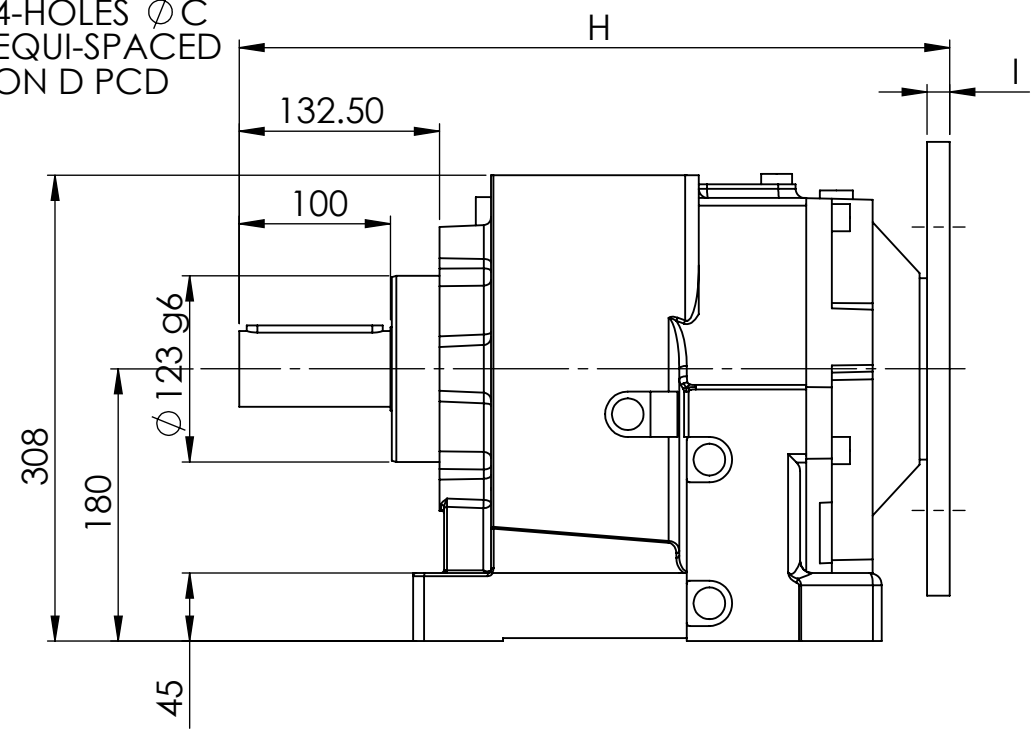
IF IN DOUBT - ASK



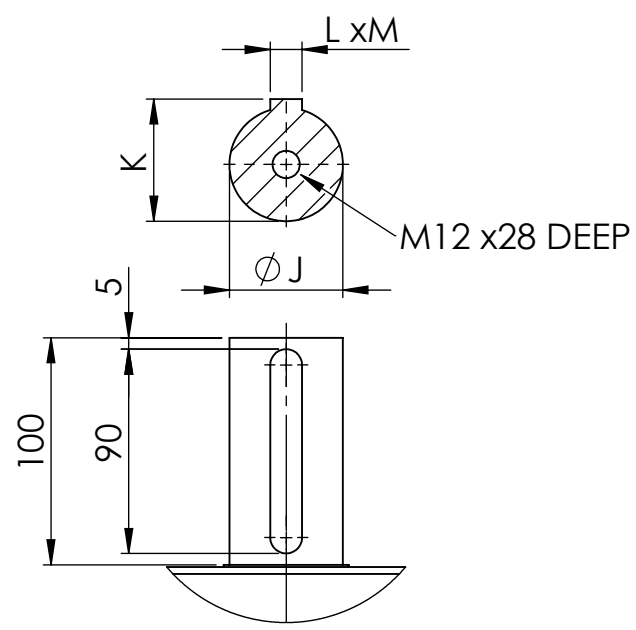
INPUT FLANGE DIMENSIONS									
	A	B	C	D	E	F	G	H	I
90 B5	200	130	12	165	8	27.3	24	467	15
100/112 B5	250	180	14	215	8	31.3	28	470	15
132 B5	300	230	14	265	10	41.3	38	470	15
160/B5	350	250	18	300	12	45.3	42	500	19



4-HOLES ϕ C
EQUI-SPACED
ON D PCD



50/2	MOTOR				
RATIO	90	100	112	132	160
3.07	/	/	/	/	/
3.67	/	/	/	/	/
4.87	/	/	/	/	/
5.47	/	/	/	/	/
6.51	/	/	/	/	/
6.72	/	/	/	/	/
7.78	/	/	/	/	/
8.94	/	/	/	/	/
10.34	/	/	/	/	/
12.07	/	/	/	/	/
14.25	/	/	/	/	/
16.04	/	/	/	/	/
18.22	/	/	/	/	/
20.90	/	/	/	/	/
24.31	/	/	/	/	/
28.76	/	/	/	/	/
31.54	/	/	/	/	/
38.77	/	/	/	/	/
43.59	/	/	/	/	/
49.93	/	/	/	/	/



OUTPUT SHAFT DIMENSIONS				
	J(j6)	K	L	M
STANDARD	50	53.5	14	9



ELECTRIC MOTORS & GEARBOXES LTD
 ASHMORE LAKE INDUSTRIAL ESTATE, WILLENHALL, WEST MIDLANDS, WV12 4LH
 PHONE 01902 601403, FAX 01902 601408.
 E MAIL sales @emag-ltd.co.uk

THIS DRAWING IN DESIGN & DETAIL IS THE PROPERTY OF EMAG LTD AND IS INTENDED SOLELY FOR THE USE OF THE PERSON OR COMPANY TO WHOM IT IS ISSUED. IN NO EVENT SHALL IT BE COPIED OR LOANED WITHOUT THE EXPRESS PERMISSION OF EMAG LTD

© ELECTRIC MOTORS & GEARBOXES LTD		FIRST ANGLE PROJECTION	
TITLE MNHL 50		CLIENT	
DRAWN R SPENCER	SCALE 1:5 (A3)	DRG No MNHL 50/2 GEAR UNIT	
DATE			