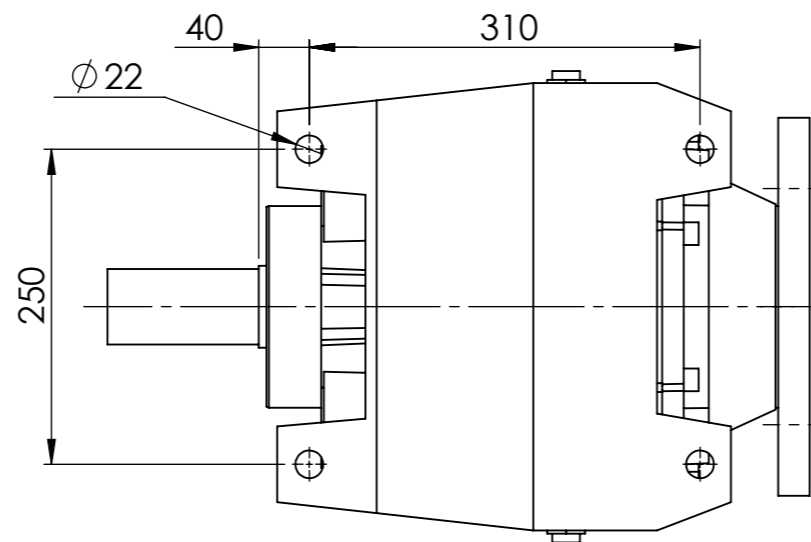
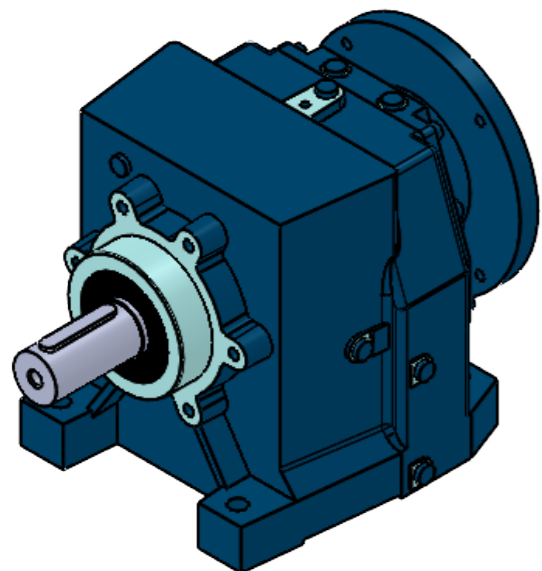
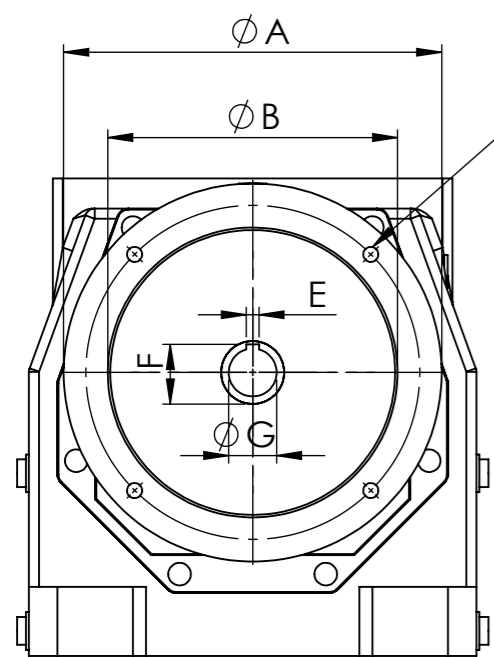


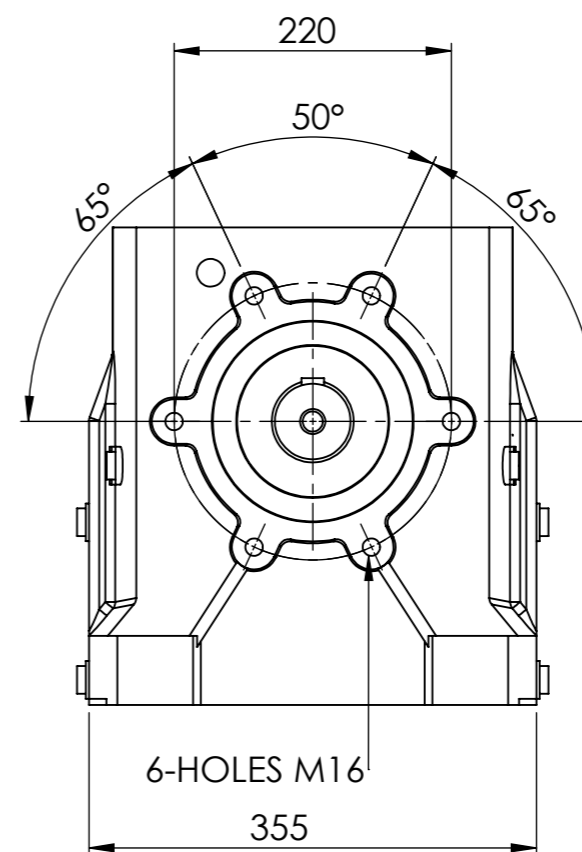
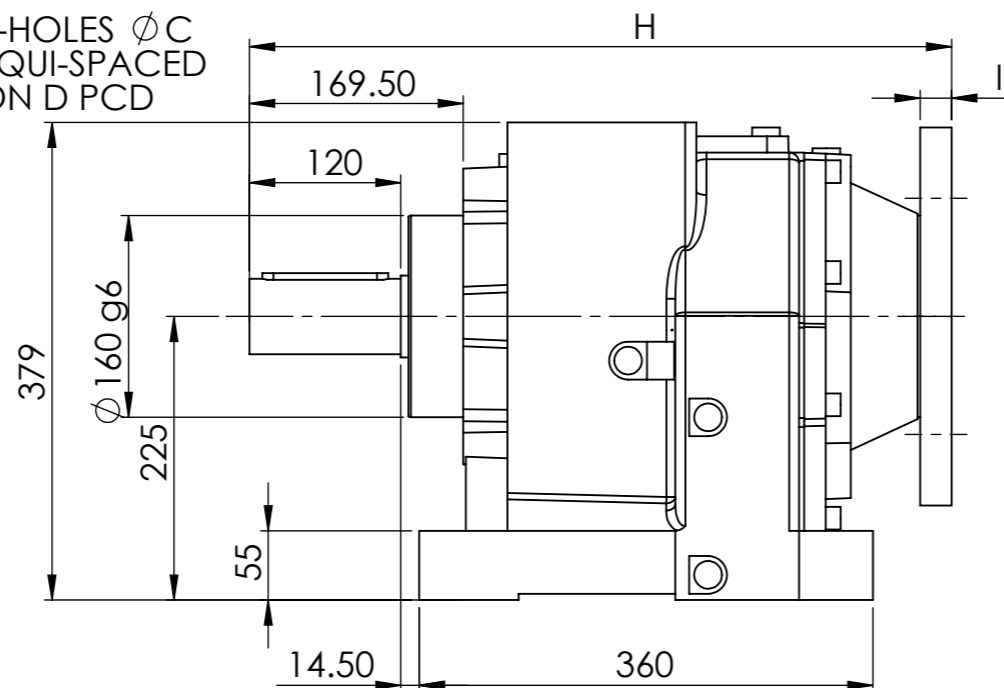
IF IN DOUBT - ASK



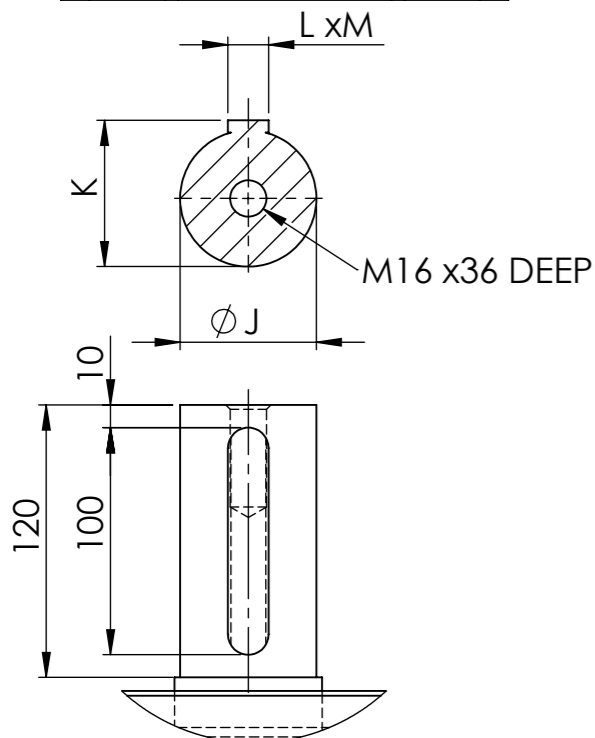
INPUT FLANGE DIMENSIONS									
	A	B	C	D	E	F	G	H	I
100/112 B5	250	180	14	215	8	31.3	28	557.5	25
132 B5	300	230	14	265	8	41.3	38	557.5	25
160/B5	350	250	18	300	12	45.3	42	557.5	25
180/B5	350	250	18	300	14	51.8	58	557.5	25
200/B5	400	300	18	350	16	59.3	55	557.5	25



4-HOLES ϕ C
EQUI-SPACED
ON D PCD



60/2	MOTOR					
RATIO	100	112	132	160	180	200
3.76			/	/	/	/
5.27			/	/	/	/
5.97			/	/	/	/
6.44			/	/	/	/
7.53			/	/	/	/
8.38			/	/	/	/
9.92			/	/	/	/
11.17			/	/	/	
13.51			/	/	/	
15.50			/	/	/	
17.99			/	/	/	
21.19			/	/	/	
25.46			/	/		
28.18			/	/		
31.44	/	/	/	/		
35.43	/	/	/	/		
40.74	/	/	/			
45.76	/	/	/			



OUTPUT SHAFT DIMENSIONS				
	J(j6)	K	L	M
STANDARD	60	64.4	18	11

EMAG ELECTRIC MOTORS & GEARBOXES LTD
 ASHMORE LAKE INDUSTRIAL ESTATE, WILLENHALL, WEST MIDLANDS, WV12 4LH
 PHONE 01902 601403, FAX 01902 601408.
 E MAIL sales@emag-ltd.co.uk

THIS DRAWING IN DESIGN & DETAIL IS THE PROPERTY OF EMAG LTD AND IS INTENDED SOLELY FOR THE USE OF THE PERSON OR COMPANY TO WHOM IT IS ISSUED. IN NO EVENT SHALL IT BE COPIED OR LOANED WITHOUT THE EXPRESS PERMISSION OF EMAG LTD

© ELECTRIC MOTORS & GEARBOXES LTD FIRST ANGLE PROJECTION

TITLE: MNHL 60 CLIENT:

DRAWN: R SPENCER SCALE: 1:6 (A3) DRG No: MNHL 60/2 GEAR UNIT

DATE: