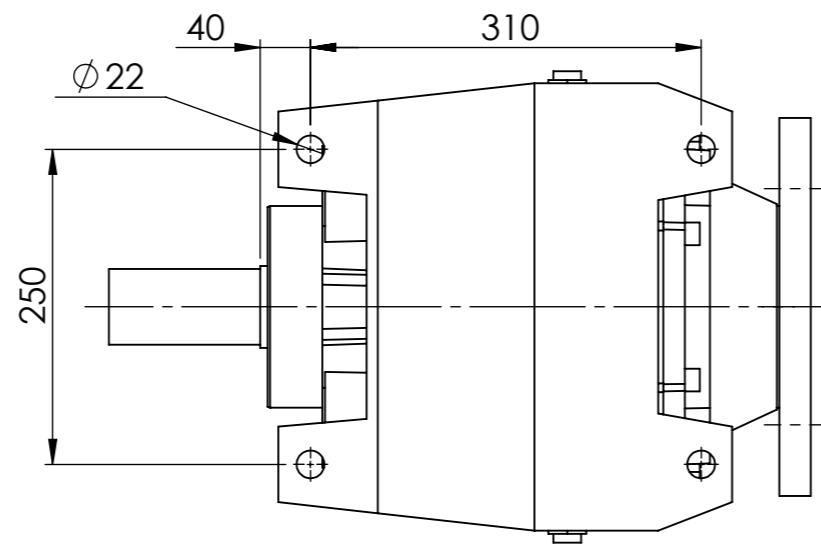
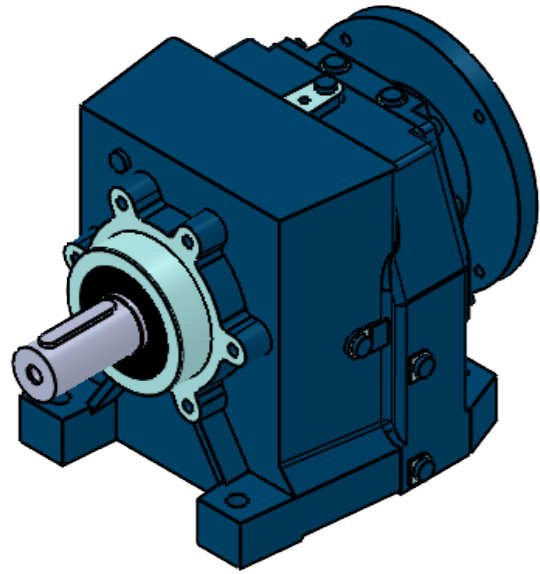
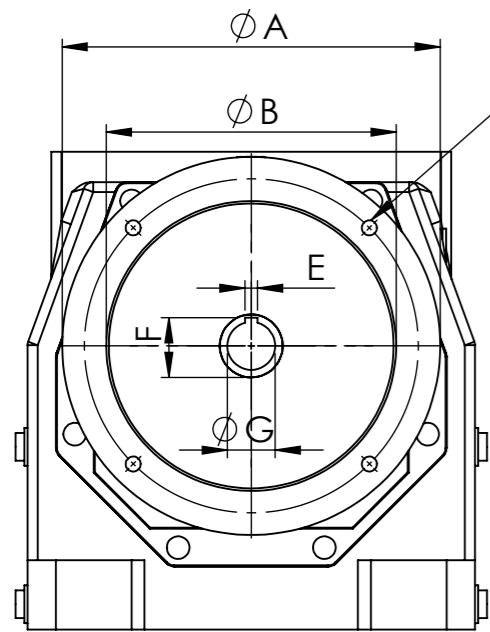


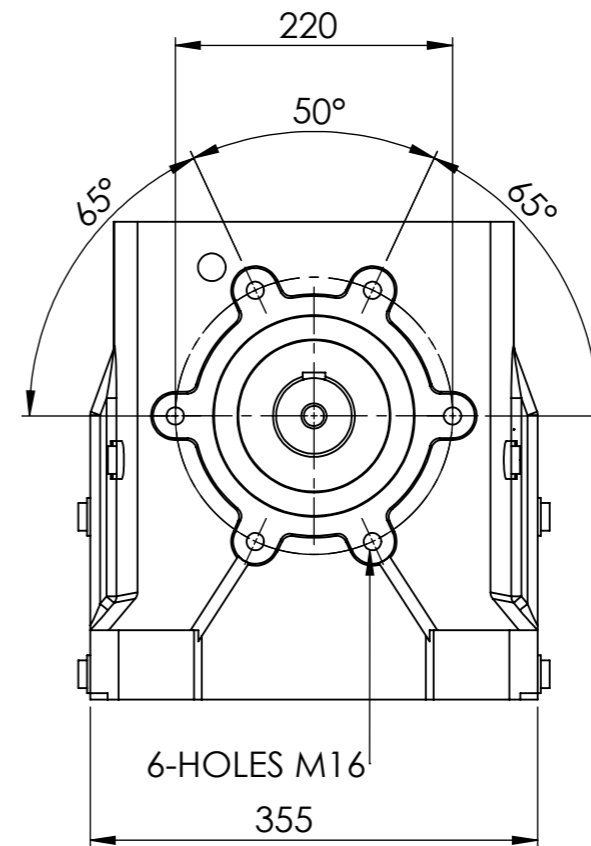
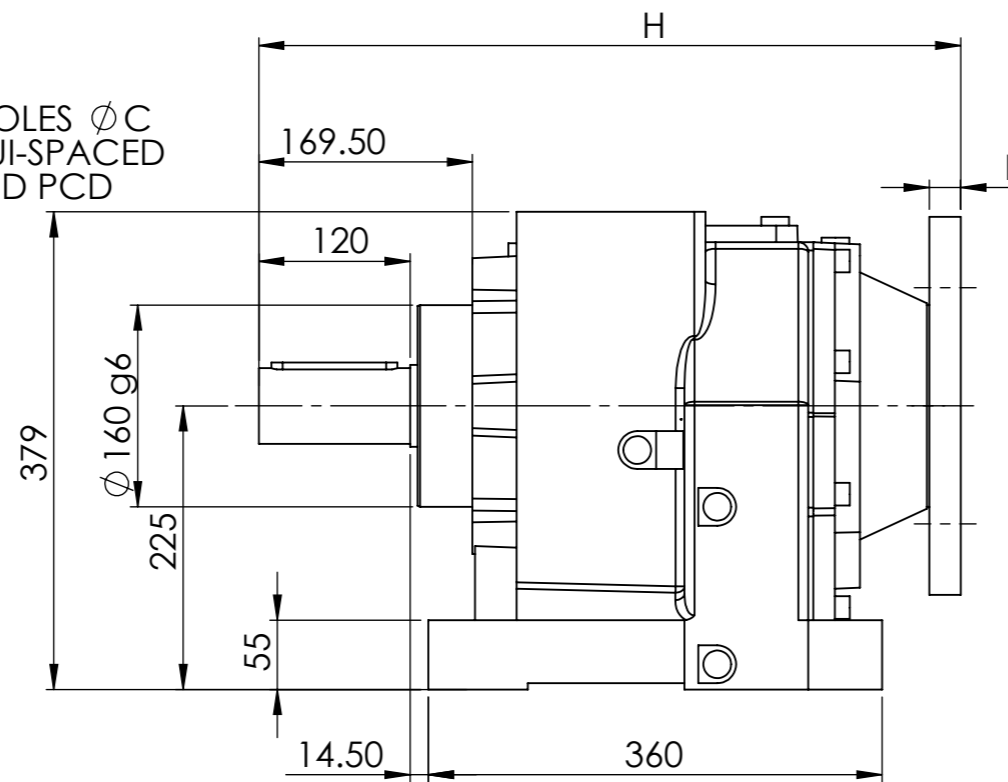
IF IN DOUBT - ASK



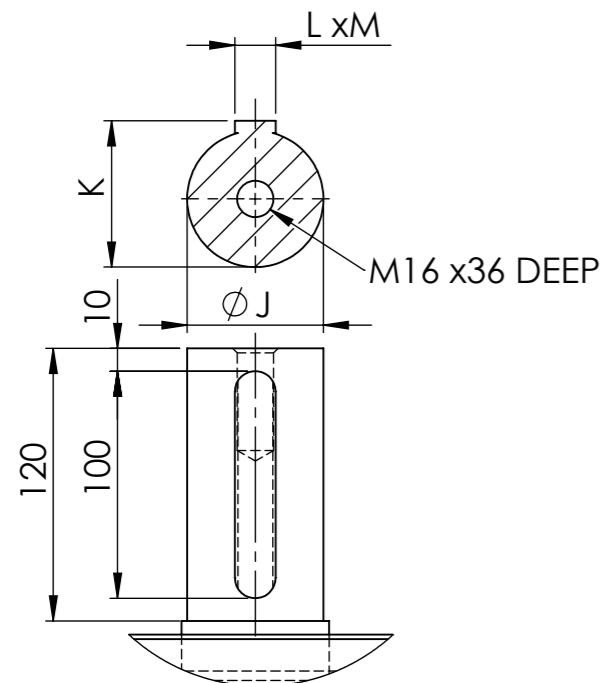
	A	B	C	D	E	F	G	H	I
80 B5	200	130	12	165	6	21.8	19	546	11.5
90 B5	200	130	12	165	6	27.3	24	546	11.5
100/112 B5	250	180	14	215	8	31.3	28	549	14
132 B5	300	230	14	265	8	41.3	38	349	14



4-HOLES ϕ C
EQUI-SPACED
ON D PCD



60/3	MOTOR				
RATIO	80	90	100	112	132
53.3	/	/	/	/	/
63.4	/	/	/	/	/
76.1	/	/	/	/	/
86.6	/	/	/	/	/
99.4	/	/	/	/	/
115.1	/	/	/	/	/
135.0	/	/			
161.0	/	/			
177.3	/	/	/		
219.7	/	/			
247.9	/	/			
287.0	/	/			
319.2	/	/			
358.5	/	/			



	J(j6)	K	L	M
STANDARD	60	64.4	18	11



ELECTRIC MOTORS & GEARBOXES LTD

ASHMORE LAKE INDUSTRIAL ESTATE, WILLENHALL, WEST MIDLANDS, WV12 4LH
PHONE 01902 601403, FAX 01902 601408.
E MAIL sales @emag-ltd.co.uk

THIS DRAWING IN DESIGN & DETAIL IS THE PROPERTY OF EMAG LTD AND IS INTENDED SOLELY FOR THE USE OF THE PERSON OR COMPANY TO WHOM IT IS ISSUED. IN NO EVENT SHALL IT BE COPIED OR LOANED WITHOUT THE EXPRESS PERMISSION OF EMAG LTD

© ELECTRIC MOTORS & GEARBOXES LTD		FIRST ANGLE PROJECTION	
TITLE MNHL 60		CLIENT	
DRAWN R SPENCER	SCALE 1:5 (A3)	DRG No MNHL 60/3 GEAR UNIT	
DATE			