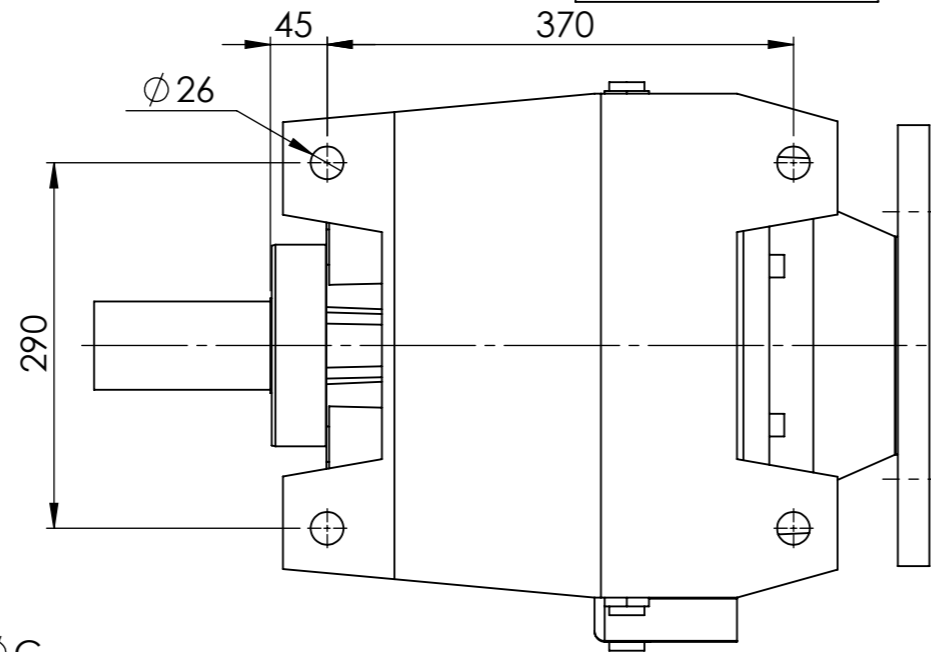
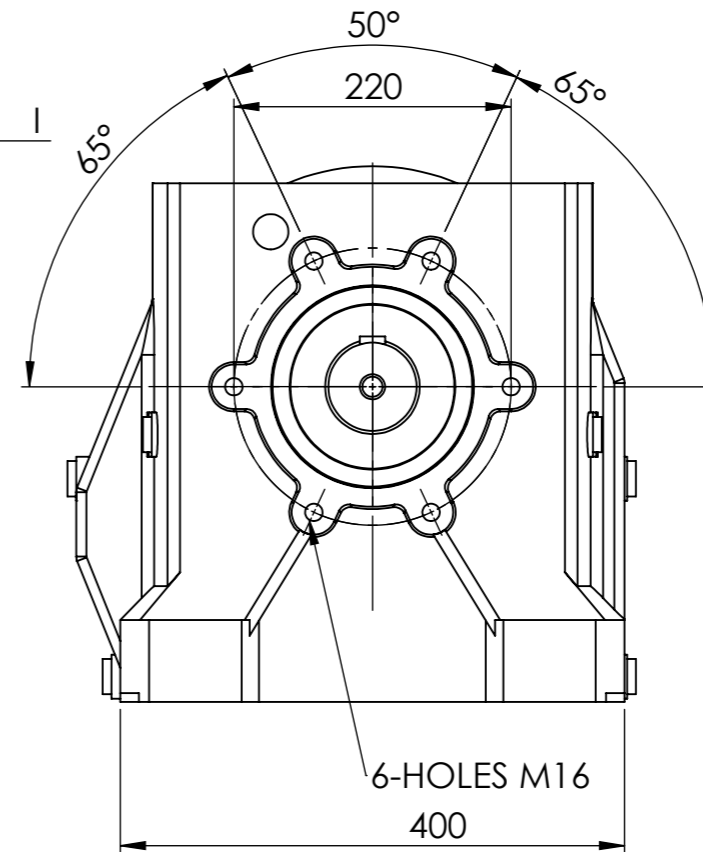
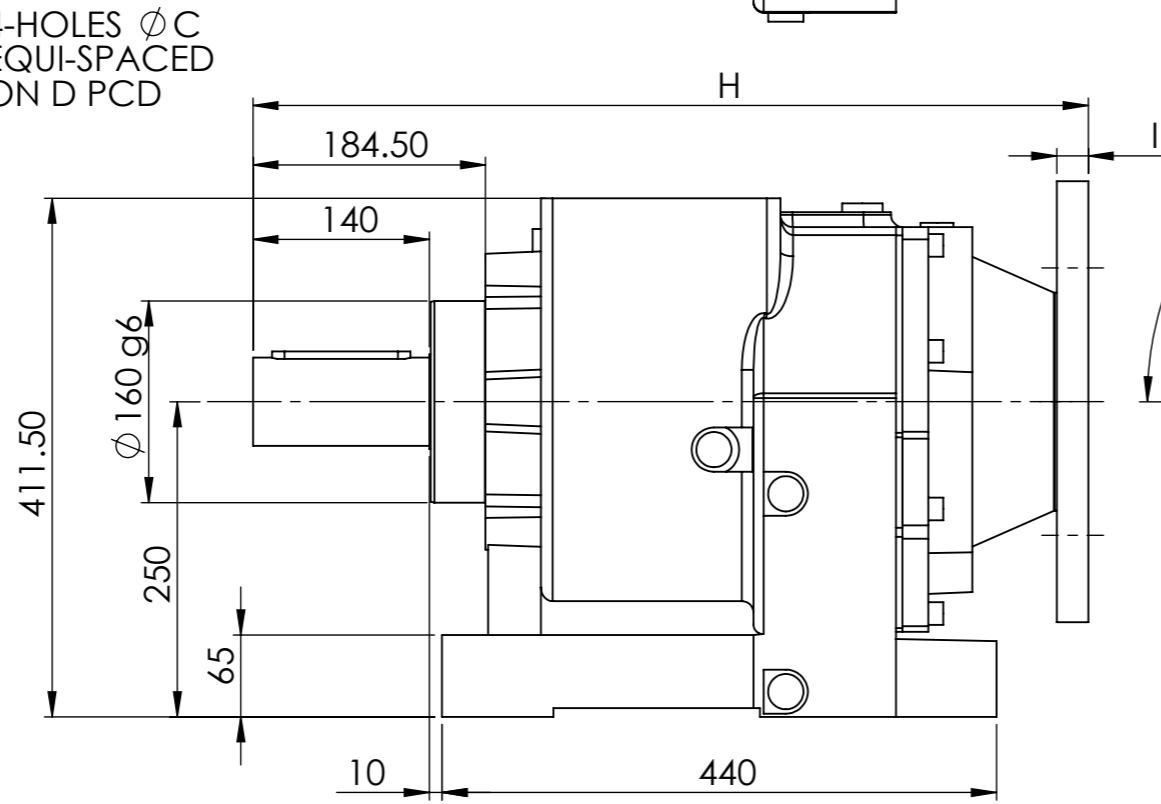
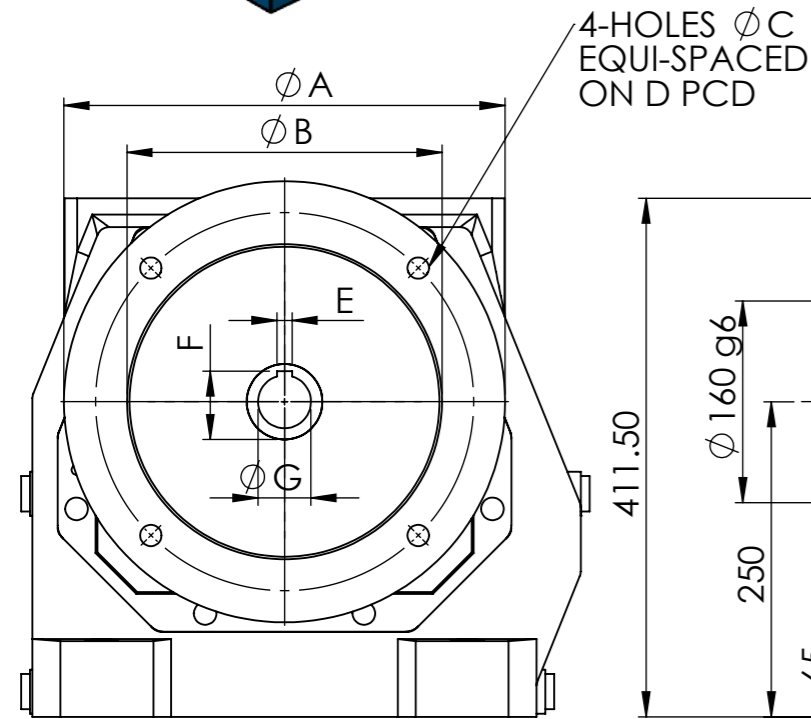


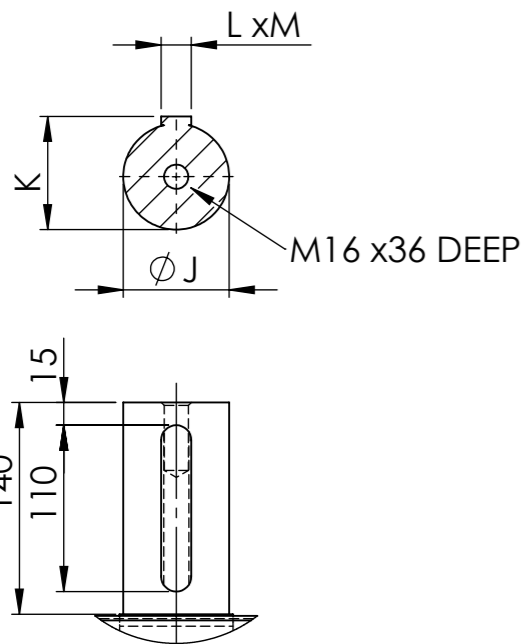
IF IN DOUBT - ASK



INPUT FLANGE DIMENSIONS									
	A	B	C	D	E	F	G	H	I
132 B5	300	230	14	265	10	41.3	38	663	25
160/B5	350	250	18	300	12	45.3	42	663	25
180/B5	350	250	18	300	14	51.8	58	663	25
200/B5	400	300	18	350	16	59.3	55	663	25
225/B5	450	400	18*	400	18	64.4	60	663	25



General Table					
70/2	MOTOR				
RATIO	132	160	180	200	225
5.52	/	/	/	/	/
6.53	/	/	/	/	/
7.42	/	/	/	/	/
8.86	/	/	/	/	/
10.20	/	/	/	/	/
11.25	/	/	/	/	/
13.14	/	/	/	/	/
14.67	/	/	/	/	/
17.55	/	/	/	/	/
20.00	/	/	/	/	/
23.06	/	/	/	/	/
27.00	/	/	/	/	/
32.25	/	/	/	/	/
35.59	/	/	/	/	/
39.60	/	/	/	/	/
44.50	/	/	/	/	/



OUTPUT SHAFT DIMENSIONS				
	J(j6)	K	L	M
STANDARD	70	74.9	20	12

* 8 OFF AT 45 DEGREES

		ELECTRIC MOTORS & GEARBOXES LTD ASHMORE LAKE INDUSTRIAL ESTATE, WILLENHALL, WEST MIDLANDS, WV12 4LH PHONE 01902 601403, FAX 01902 601408. E MAIL sales @emag-ltd.co.uk	
<small>THIS DRAWING IN DESIGN & DETAIL IS THE PROPERTY OF EMAG LTD AND IS INTENDED SOLELY FOR THE USE OF THE PERSON OR COMPANY TO WHOM IT IS ISSUED. IN NO EVENT SHALL IT BE COPIED OR LOANED WITHOUT THE EXPRESS PERMISSION OF EMAG LTD</small>			
© ELECTRIC MOTORS & GEARBOXES LTD		FIRST ANGLE PROJECTION	
TITLE MNHL 70		CLIENT	
DRAWN R SPENCER	SCALE 1:6 (A3)	DRG No	MNHL 70/2 GEAR UNIT
DATE			