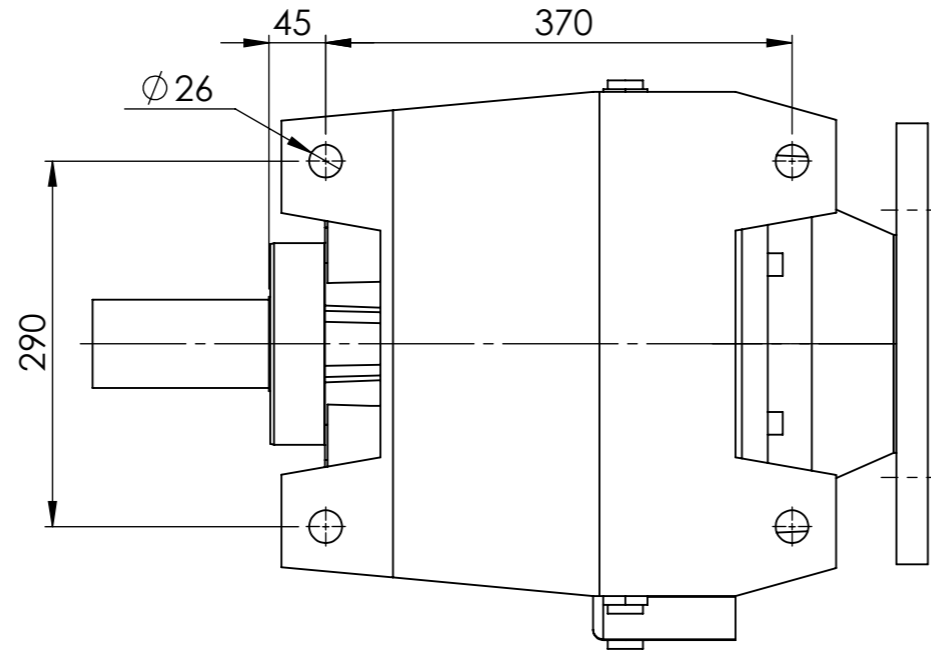
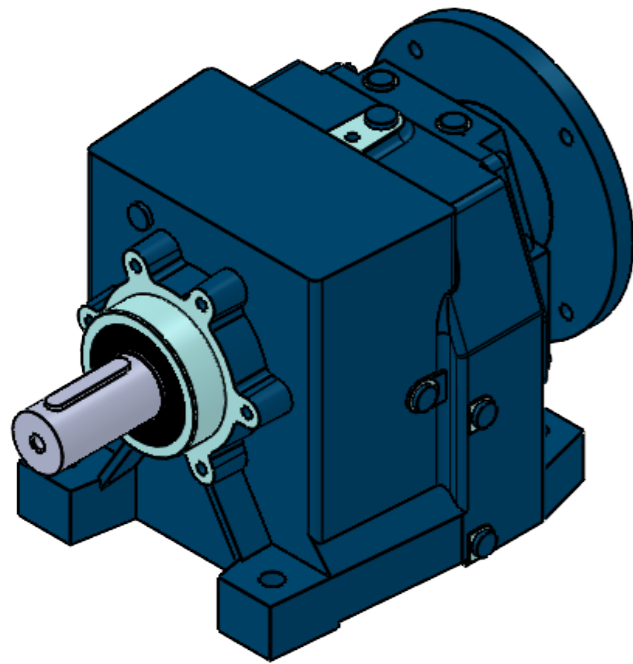
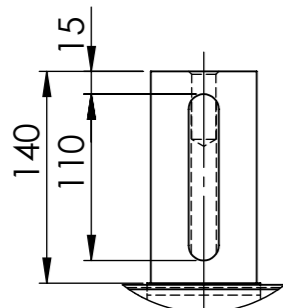
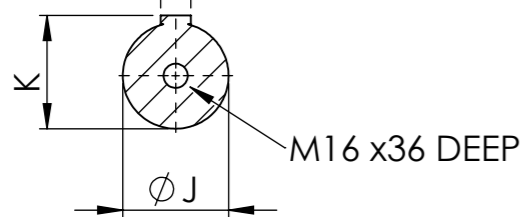
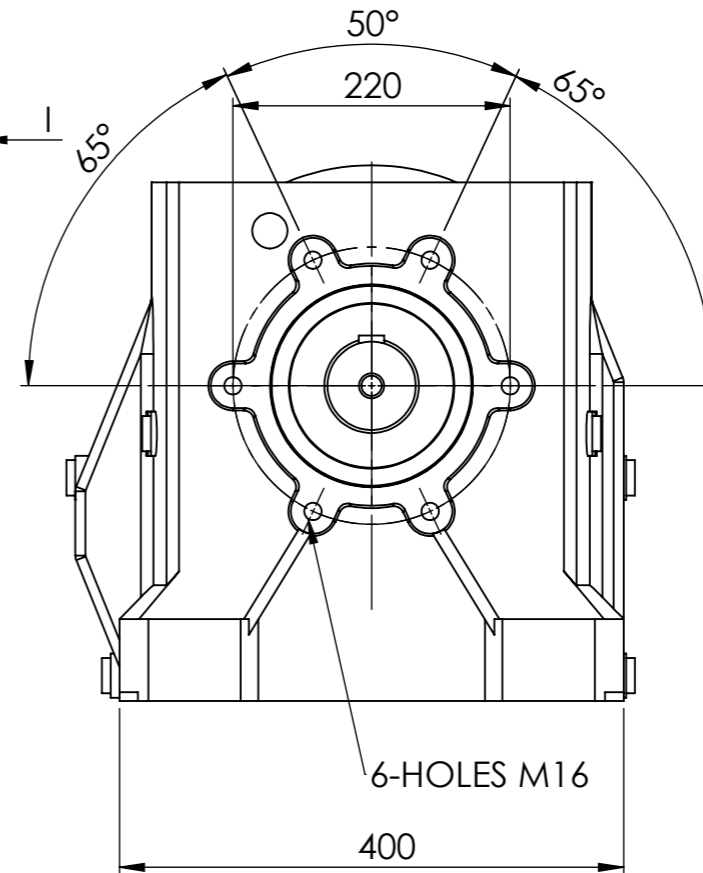
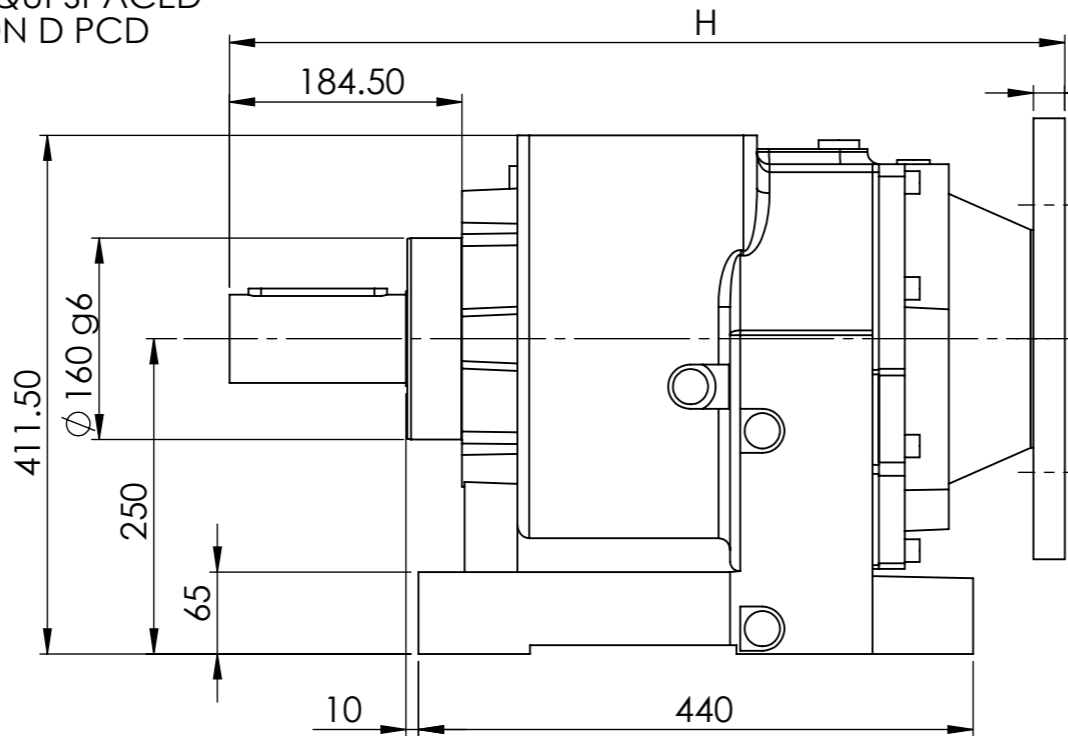
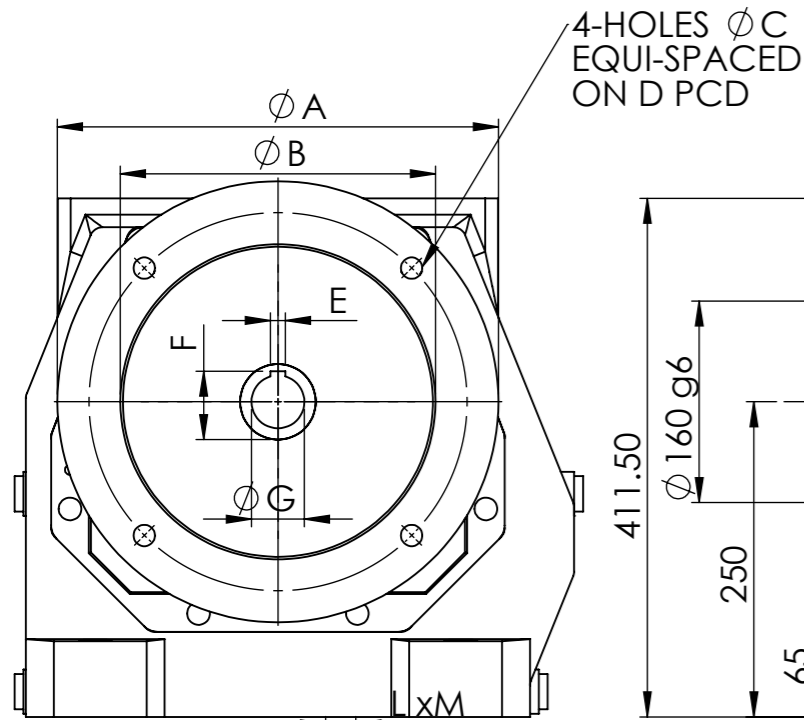


IF IN DOUBT - ASK



INPUT FLANGE DIMENSIONS									
	A	B	C	D	E	F	G	H	I
90 B5	200	130	12	165	8	27.3	24	621	15
100/112 B5	250	180	14	215	8	31.3	28	624	15
132 B5	300	230	14	265	10	41.3	38	624	15
160/B5	350	250	18	300	12	45.3	42	654	19

70/3	MOTOR				
RATIO	90	100	112	132	160
48.33			/	/	/
57.77		/	/	/	/
66.40		/	/	/	/
76.81		/	/	/	
89.63	/	/	/	/	
105.79	/	/	/	/	
119.13	/	/	/	/	
135.27	/	/	/	/	
155.22	/	/	/	/	
180.48	/	/	/	/	
213.52	/	/			
234.17	/	/			
287.86	/	/			
323.65	/	/			
370.73	/	/			



	OUTPUT SHAFT DIMENSIONS			
	J(j6)	K	L	M
STANDARD	70	74.9	20	12

**ELECTRIC MOTORS & GEARBOXES LTD**  
 ASHMORE LAKE INDUSTRIAL ESTATE, WILLENHALL, WEST MIDLANDS, WV12 4LH  
 PHONE 01902 601403, FAX 01902 601408.  
 E MAIL sales@emag-ltd.co.uk

THIS DRAWING IN DESIGN & DETAIL IS THE PROPERTY OF EMAG LTD AND IS INTENDED SOLELY FOR THE USE OF THE PERSON OR COMPANY TO WHOM IT IS ISSUED. IN NO EVENT SHALL IT BE COPIED OR LOANED WITHOUT THE EXPRESS PERMISSION OF EMAG LTD

© ELECTRIC MOTORS & GEARBOXES LTD		FIRST ANGLE PROJECTION	
TITLE <b>MNHL 70</b>		CLIENT	
DRAWN R SPENCER	SCALE 1:5 (A3)	DRG No <b>MNHL 70/3 GEAR UNIT</b>	
DATE			