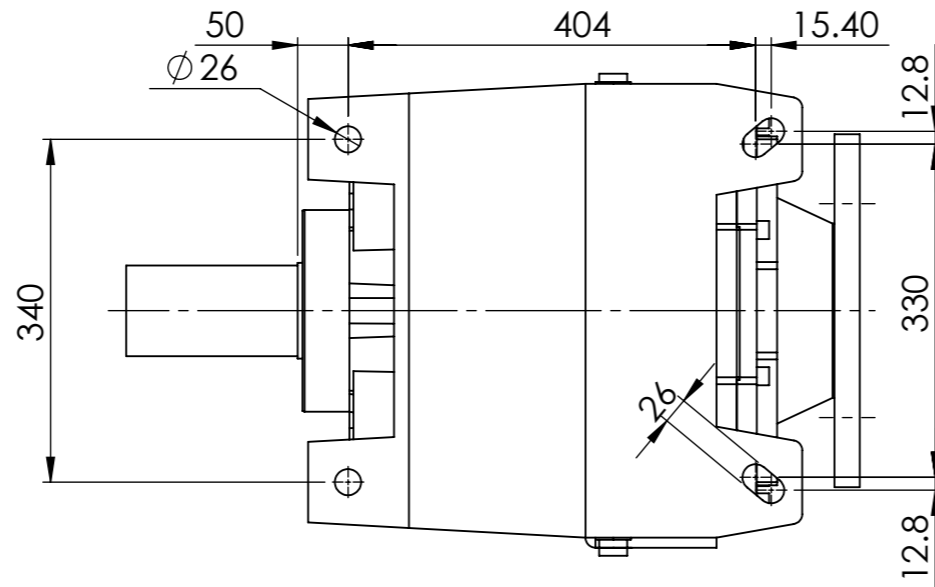
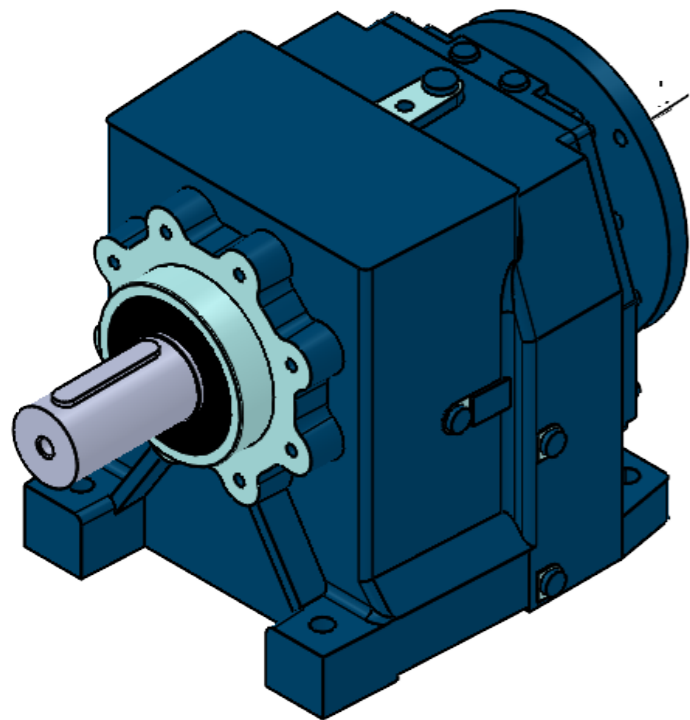
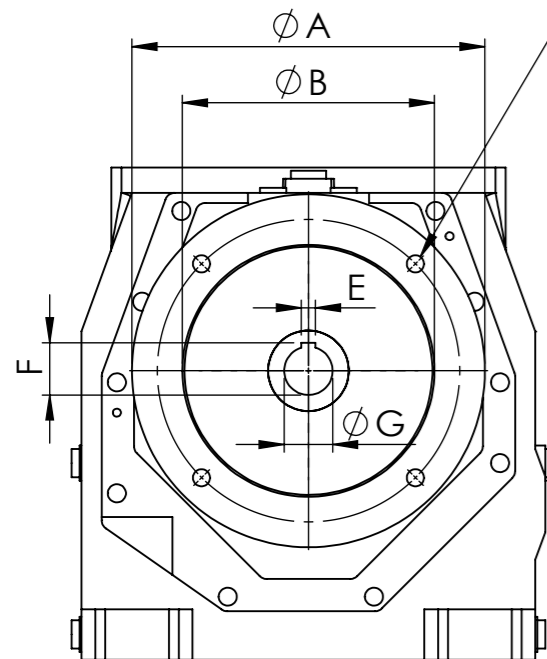


IF IN DOUBT - ASK

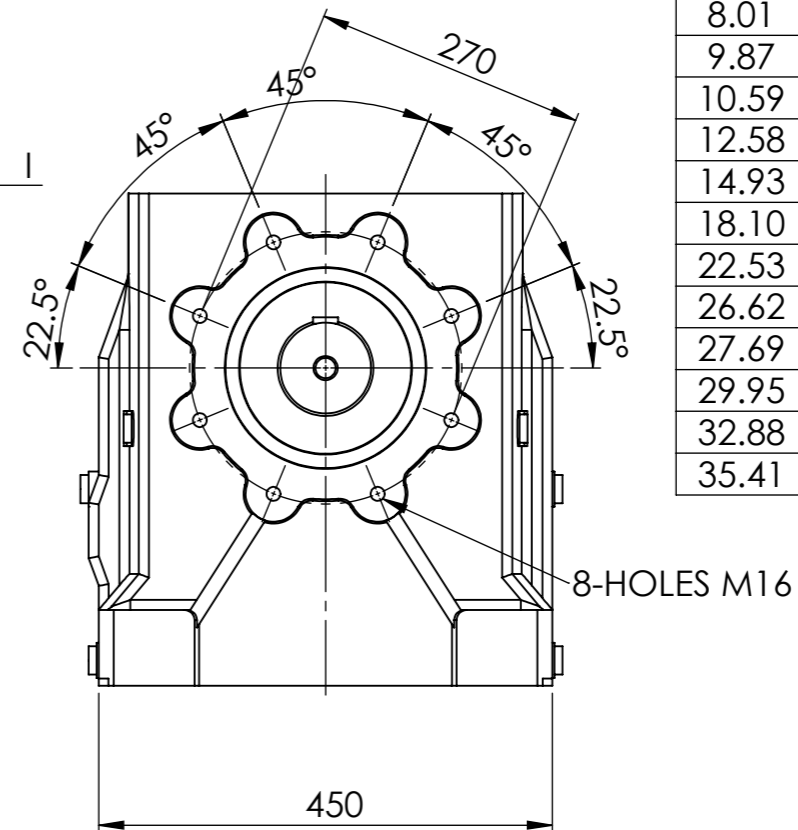
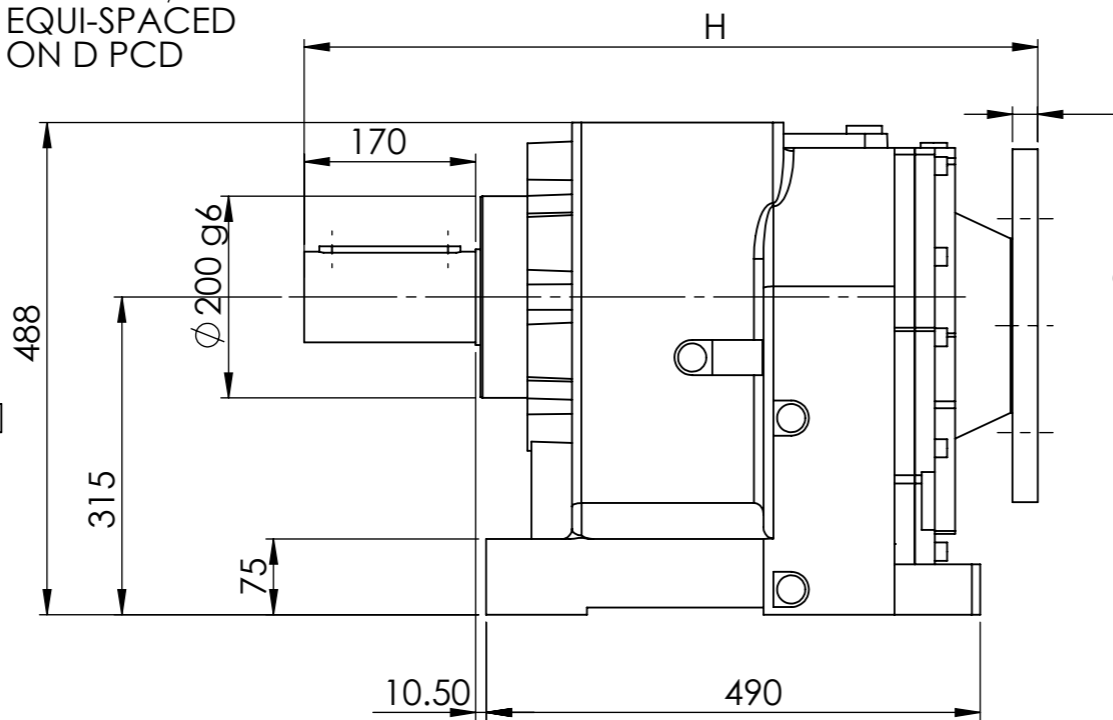


INPUT FLANGE DIMENSIONS									
	A	B	C	D	E	F	G	H	I
132 B5	300	230	14	265	10	41.3	38	728	25
160/B5	350	250	18	300	12	45.3	42	728	25
180/B5	350	250	18	300	14	51.8	58	728	25
200/B5	400	300	18	350	16	59.3	55	728	25
225/B5	450	400	18	400	18*	64.4	60	775	25
250/B5	550	400	18	450	18*	69.4	65	775	25

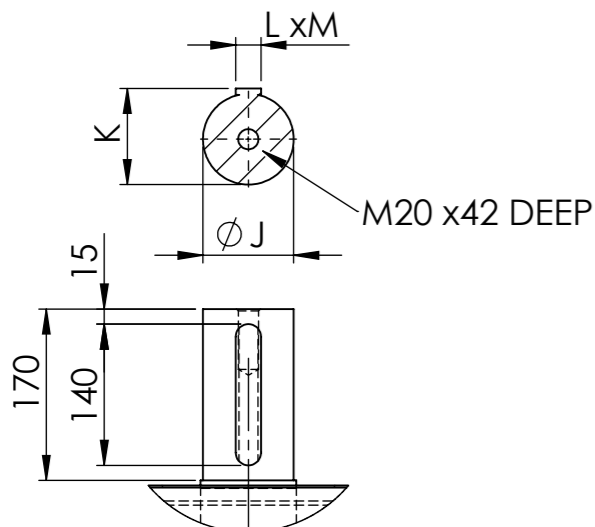
90/2	MOTOR					
RATIO	132	160	180	200	225	250
5.09				/	/	/
5.99				/	/	/
6.59				/	/	/
8.01				/	/	/
9.87				/	/	/
10.59				/	/	/
12.58			/	/	/	/
14.93			/	/	/	/
18.10			/	/	/	/
22.53		/	/	/	/	/
26.62		/	/	/	/	/
27.69		/	/	/	/	/
29.95	/	/	/	/	/	/
32.88	/	/	/	/	/	/
35.41	/	/	/	/	/	/





4-HOLES ϕC
EQUI-SPACED
ON D PCD



*8 HOLES AT 45 DEGREES



OUTPUT SHAFT DIMENSIONS				
	J(j6)	K	L	M
STANDARD	90	95	25	14

		ELECTRIC MOTORS & GEARBOXES LTD ASHMORE LAKE INDUSTRIAL ESTATE, WILLENHALL, WEST MIDLANDS, WV12 4LH PHONE 01902 601403, FAX 01902 601408. E MAIL sales @emag-ltd.co.uk	
		THIS DRAWING IN DESIGN & DETAIL IS THE PROPERTY OF EMAG LTD AND IS INTENDED SOLELY FOR THE USE OF THE PERSON OR COMPANY TO WHOM IT IS ISSUED. IN NO EVENT SHALL IT BE COPIED OR LOANED WITHOUT THE EXPRESS PERMISSION OF EMAG LTD	
© ELECTRIC MOTORS & GEARBOXES LTD		FIRST ANGLE PROJECTION 	
TITLE MNHL 90		CLIENT	
DRAWN R SPENCER	SCALE 1:7.5 (A3)	DRG No	MNHL 90/2 GEAR UNIT
DATE			